



# Hfe Gene Knock-Out in a Mouse Model of Hereditary Hemochromatosis Affects Bodily Iron Isotope Compositions

Emmanuelle Albalat, Thibault Cavey, Patricia Leroyer, Martine Ropert,  
Vincent Balter, Olivier Loréal

## ► To cite this version:

Emmanuelle Albalat, Thibault Cavey, Patricia Leroyer, Martine Ropert, Vincent Balter, et al.. Hfe Gene Knock-Out in a Mouse Model of Hereditary Hemochromatosis Affects Bodily Iron Isotope Compositions. *Frontiers in Medicine*, 2021, 8, pp.711822. 10.3389/fmed.2021.711822 . hal-03852527

**HAL Id: hal-03852527**

**<https://cnrs.hal.science/hal-03852527>**

Submitted on 15 Nov 2022

**HAL** is a multi-disciplinary open access archive for the deposit and dissemination of scientific research documents, whether they are published or not. The documents may come from teaching and research institutions in France or abroad, or from public or private research centers.

L'archive ouverte pluridisciplinaire **HAL**, est destinée au dépôt et à la diffusion de documents scientifiques de niveau recherche, publiés ou non, émanant des établissements d'enseignement et de recherche français ou étrangers, des laboratoires publics ou privés.



Distributed under a Creative Commons Attribution 4.0 International License



# Hfe Gene Knock-Out in a Mouse Model of Hereditary Hemochromatosis Affects Bodily Iron Isotope Compositions

Emmanuelle Albalat<sup>1\*</sup>, Thibault Cavey<sup>2</sup>, Patricia Leroyer<sup>2</sup>, Martine Ropert<sup>2</sup>, Vincent Balter<sup>1</sup> and Olivier Loréal<sup>2\*</sup>

<sup>1</sup> CNRS UMR 5276, LGL-TPE, ENS de Lyon, Université de Lyon, Villeurbanne, France, <sup>2</sup> INSERM, Univ Rennes, INRAe, UMR 1241, Plateforme AEM2, CHU Pontchaillou, Institut Nutrition Métabolismes et Cancer (NuMeCan), Rennes, France

## OPEN ACCESS

### Edited by:

Stephanie Gras,  
La Trobe University, Australia

### Reviewed by:

Emma Grant,  
La Trobe University, Australia  
Robert Fleming,  
Saint Louis University, United States

### \*Correspondence:

Emmanuelle Albalat  
emmanuelle.albalat@ens-lyon.fr  
Olivier Loréal  
olivier.loreal@univ-rennes1.fr

### Specialty section:

This article was submitted to  
Translational Medicine,  
a section of the journal  
Frontiers in Medicine

**Received:** 19 May 2021

**Accepted:** 20 September 2021

**Published:** 15 October 2021

### Citation:

Albalat E, Cavey T, Leroyer P,  
Ropert M, Balter V and Loréal O  
(2021) Hfe Gene Knock-Out in a  
Mouse Model of Hereditary  
Hemochromatosis Affects Bodily Iron  
Isotope Compositions.  
Front. Med. 8:711822.  
doi: 10.3389/fmed.2021.711822

Hereditary hemochromatosis is a genetic iron overload disease related to a mutation within the HFE gene that controls the expression of hepcidin, the master regulator of systemic iron metabolism. The natural stable iron isotope composition in whole blood of control subjects is different from that of hemochromatosis patients and is sensitive to the amount of total iron removed by the phlebotomy treatment. The use of stable isotopes to unravel the pathological mechanisms of iron overload diseases is promising but hampered by the lack of data in organs involved in the iron metabolism. Here, we use  $Hfe^{-/-}$  mice, a model of hereditary hemochromatosis, to study the impact of the knock-out on iron isotope compositions of erythrocytes, spleen and liver. Iron concentration increases in liver and red blood cells of  $Hfe^{-/-}$  mice compared to controls. The iron stable isotope composition also increases in liver and erythrocytes, consistent with a preferential accumulation of iron heavy isotopes in  $Hfe^{-/-}$  mice. In contrast, no difference in the iron concentration nor isotope composition is observed in spleen of  $Hfe^{-/-}$  and control mice. Our results in mice suggest that the observed increase of whole blood isotope composition in hemochromatosis human patients does not originate from, but is aggravated by, bloodletting. The subsequent rapid increase of whole blood iron isotope composition of treated hemochromatosis patients is rather due to the release of hepatic heavy isotope-enriched iron than augmented iron dietary absorption. Further research is required to uncover the iron light isotope component that needs to balance the accumulation of hepatic iron heavy isotope, and to better understand the iron isotope fractionation associated to metabolism dysregulation during hereditary hemochromatosis.

**Keywords:** iron isotope, organs, mouse model, iron overloaded, hereditary hemochromatosis (HFE)

## INTRODUCTION

Iron (Fe) homeostasis tuning is essential as Fe deficiency or excess in the body can lead to clinical severe consequences. Hereditary Hemochromatosis (HH) is a Fe overload disease, which is one of the most common genetic disease in Western countries (1, 2). The first clinical symptoms appear classically around 40 years old in men and 50 years in women. In absence of treatment, HH may

favor liver cirrhosis, diabetes, heart failure, and reduced life expectancy (1). The treatment is based on Fe depletion that requires to perform phlebotomies, which must be done weekly in the initial phase and then bimonthly during the maintenance phase (3, 4). Promising chelating agents exist but are not recommended in HH due to potential harmful side effects (4, 5). HH is mainly related to a mutation of the HFE gene that plays a role in the control of hepcidin expression, the master regulator of systemic iron metabolism. Hepcidin, by inducing the degradation of the ferroportin protein, the only known Fe exporter from cells toward plasma, limits Fe release and thus controls the level of the saturation of transferrin, the Fe transport protein in plasma (6). An increase of transferrin saturation exposes to Fe overload, especially in the liver, pancreas and heart (6–10). Therefore, regulation of hepcidin expression plays a major role in the maintenance of Fe homeostasis since there is no, or very limited, physiological mechanisms for Fe excretion. During HH, transferrin saturation increases above 45%, leading to the appearance of abnormal biochemical forms of Fe in plasma: the Non-Transferrin Bound Iron (NTBI). The NTBI is not fully characterized. It is associated to low molecular compounds such as citrate or to proteins such as albumin (11, 12). During its association to transferrin, Fe must undergo an oxidation step that is reported to be enzyme-dependent. Importantly, NTBI that is easily incorporated by liver, heart and pancreas plays a major role in the development of Fe overload, especially in the liver (11–13).

The Human adult organism contains between 3 and 4 g of Fe. Iron metabolism is typified by an important recycling from erythrocytes, which contain about 70% of total Fe that is associated to hemoglobin, the oxygen transporter. Senescent red blood cells are taken up by macrophages and Fe is recycled during the erythrophagocytosis process that is the daily most important source of Fe for plasma. Importantly, despite the fact that there is no active mechanism for Fe excretion, there are few losses (1–2 mg per day) that cannot be avoided, such as cell desquamation, urine, and bleeding. Therefore, an equivalent amount of dietary Fe must be taken up daily by enterocytes. The main sources of Fe for plasma are thus the recycling of erythrocytes by macrophages during the erythrophagocytosis process, the dietary Fe absorption through the duodenum, and also in certain circumstances, the release of stored Fe from hepatocytes (14).

Iron is composed of 4 stable isotopes ( $^{54}\text{Fe}$ ,  $^{56}\text{Fe}$ ,  $^{57}\text{Fe}$  and  $^{58}\text{Fe}$ , with respective relative abundances 5.8%, 91.8%, 2.1% and 0.3%) which relative proportions, i.e. isotope composition hereafter noted  $\delta^{56}\text{Fe}$ , may vary in health (15–19) and disease, including HH (20–22). The blood  $\delta^{56}\text{Fe}$  value of HH bloodletting treated patients is significantly higher compared to healthy age matched controls (20–22), and increases as a function of total Fe removed by phlebotomy (23). Two main mechanisms, the increase of Fe absorption efficiency and Fe release from Fe storage organs, which are not exclusive, have been proposed to explain these observations. First, phlebotomy stimulates intestinal Fe absorption (5) leading to a hypothesized reduced intensity of isotopic fractionation between diet and blood and therefore an increase of the blood  $\delta^{56}\text{Fe}$  value (24). Second, to maintain Fe balance and ensure erythrocytes production after phlebotomy, storage organs enriched in heavy isotopes, are solicited to release

Fe to the plasma. This iron is used to meet the increased need for erythrocyte heme production (21, 23).

In this study, in order to unravel the specific Fe isotope fractionation in HH, we measure the Fe isotope composition in liver, spleen and erythrocytes in a genetically engineered mouse model of HH, the knock-out  $\text{Hfe}^{-/-}$  mouse model, and in wild type  $\text{Hfe}^{+/+}$  (WT) controls. Plasma transferrin saturation, plasma Fe concentration and hepcidin expression are also measured.

## METHODS

### Animal Handling

The study was approved by the ethical Rennes committee for animal experimentation. 12 months old male C57BL/6J mice were included in the study within two groups i.e., control  $\text{Hfe}^{+/+}$  mice ( $n = 6$ ) and  $\text{Hfe}^{-/-}$  mice ( $n = 6$ ). Knock-out  $\text{Hfe}^{-/-}$  mice were generated by crossing heterozygous animals as previously reported (25). All mice were housed in animal facilities (ARCHE) of UMS Biosit in Rennes and fed a standard diet CRM-E (Special Diet Services) with a Fe concentration of about 140  $\mu\text{g/g}$ . Mice were sacrificed at 12 months to ensure that iron overload was effective in the  $\text{Hfe}^{-/-}$  group. After anesthesia in the morning between 9 and 12 am, a trans-diaphragmatic intracardiac puncture was done to collect blood in sodium heparin tubes suitable for trace element analysis. Liver and spleen samples were frozen in liquid nitrogen, and stored at  $-80^{\circ}\text{C}$ .

### Sample Preparation

Plasma, erythrocytes, liver and spleen samples were handled with special care in order to avoid environmental contamination. After blood sample centrifugation, plasma was taken and frozen in polypropylene cryotubes at  $-80^{\circ}\text{C}$ . Blood cell pellets, mainly erythrocytes containing very high amount of Fe in hemoglobin, were washed three times in NaCl 0.9%, centrifuged in NaCl 0.9% (3,000 g/min), and were then aliquoted and frozen in polypropylene cryotubes at  $-80^{\circ}\text{C}$ .

Liver and spleen samples were desiccated for 15 h at  $120^{\circ}\text{C}$  in an oven and were weighed. Aliquots of about 10  $\mu\text{l}$  were collected from frozen erythrocytes and about 2 to 5 mg were taken from dried liver and spleen samples. Erythrocytes, liver and spleen samples were mineralized in Teflon tubes filled with 2 ml of concentrated  $\text{HNO}_3$  (Fisher Chemical – Optima Grade). The Teflon tubes were placed in a MARS6 (CEM) microwave with a temperature maintained at  $180^{\circ}\text{C}$  during 2 h. This procedure was repeated twice by adding 1 ml of concentrated  $\text{HNO}_3$  to ensure a total mineralization of the samples. Dissolved samples were preserved at  $4^{\circ}\text{C}$  until elemental or isotopic analysis.

### Elemental and Isotopic Analysis

A small aliquot (5%) was taken for the determination of Fe concentration by inductively coupled plasma mass spectrometry (ICP-MS, X-Series II, Thermo Scientific) at the  $\text{AEM2}$  Platform from University of Rennes 1/Rennes Hospital, as previously reported (26).

The remaining solution was evaporated to dryness and devoted to Fe chemical purification prior to isotope analysis.

Iron was isolated by ion-exchange chromatography as described in details in previous study (27). Briefly, the dried residue was taken up in HCl 6N and evaporated to dryness twice to guarantee total removal of remaining nitrate from the digestion procedure. Iron was then fixed on AG1-X8 anionic resin in HCl 6N media with traces of H<sub>2</sub>O<sub>2</sub> in which the matrix elements pass through the column and are discarded. The elution of Fe was achieved by diluted HNO<sub>3</sub> 0.5N and the total isolation procedure was repeated twice. Iron isotope compositions were measured using a Neptune Plus multi-collector inductively coupled plasma mass spectrometer (MC-ICPMS, Thermo Scientific) in medium mass resolution mode at ENS de Lyon. Iron solutions were diluted to 0.9 mg/L and doped with Ni at the same concentration to monitor and correct for instrumental mass fractionation. The instrument settings and analytical conditions are described in previous work (27). All the Fe isotope compositions are given in the delta annotation (expressed in ‰) and reported relative to the international isotopic standard NIST IRMM-014 with the following formula:

$$\delta^{56/54}\text{Fe}_{\text{IRMM14}} = \left[ \frac{\left( \frac{^{56}\text{Fe}}{^{54}\text{Fe}} \right)_{\text{sample}}}{\left( \frac{^{56}\text{Fe}}{^{54}\text{Fe}} \right)_{\text{std}}} - 1 \right]$$

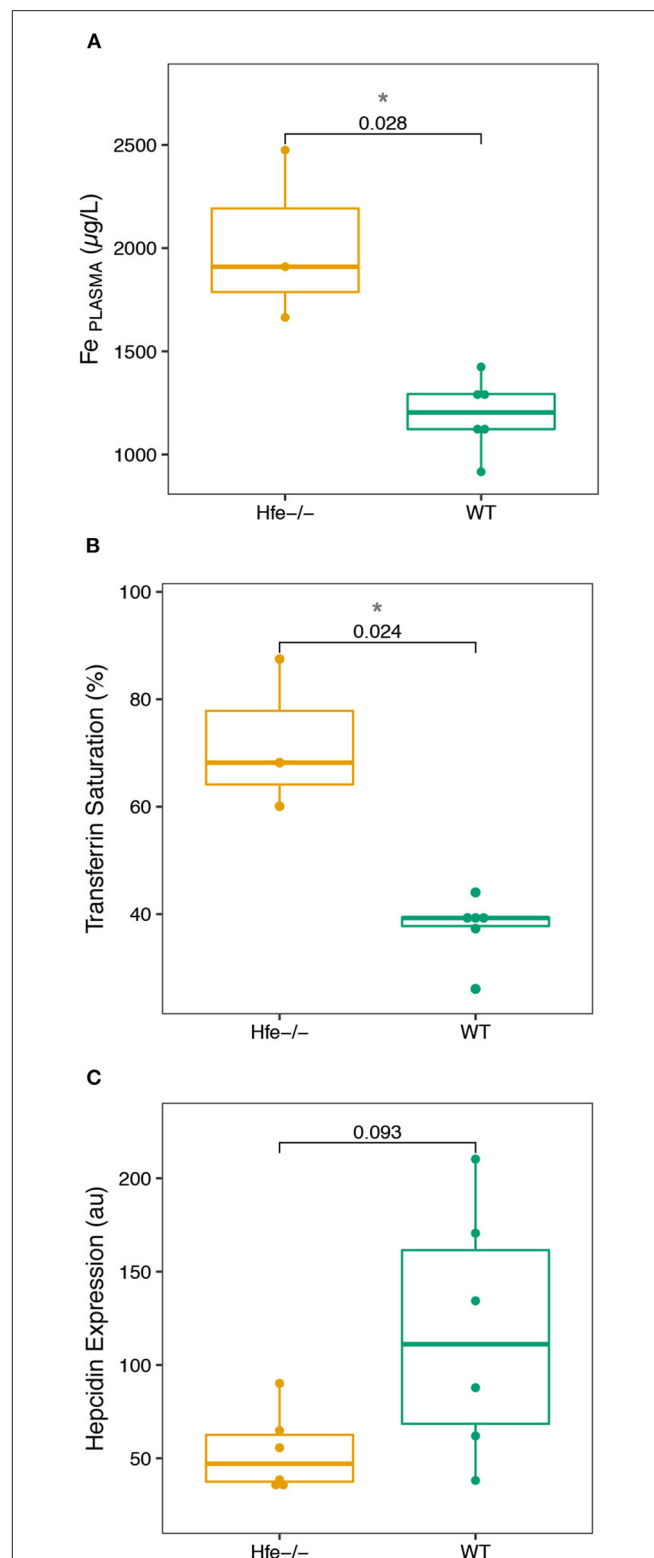
And will be hereafter abbreviated  $\delta^{56}\text{Fe}$ .

## Plasma Iron Concentration and Transferrin Saturation

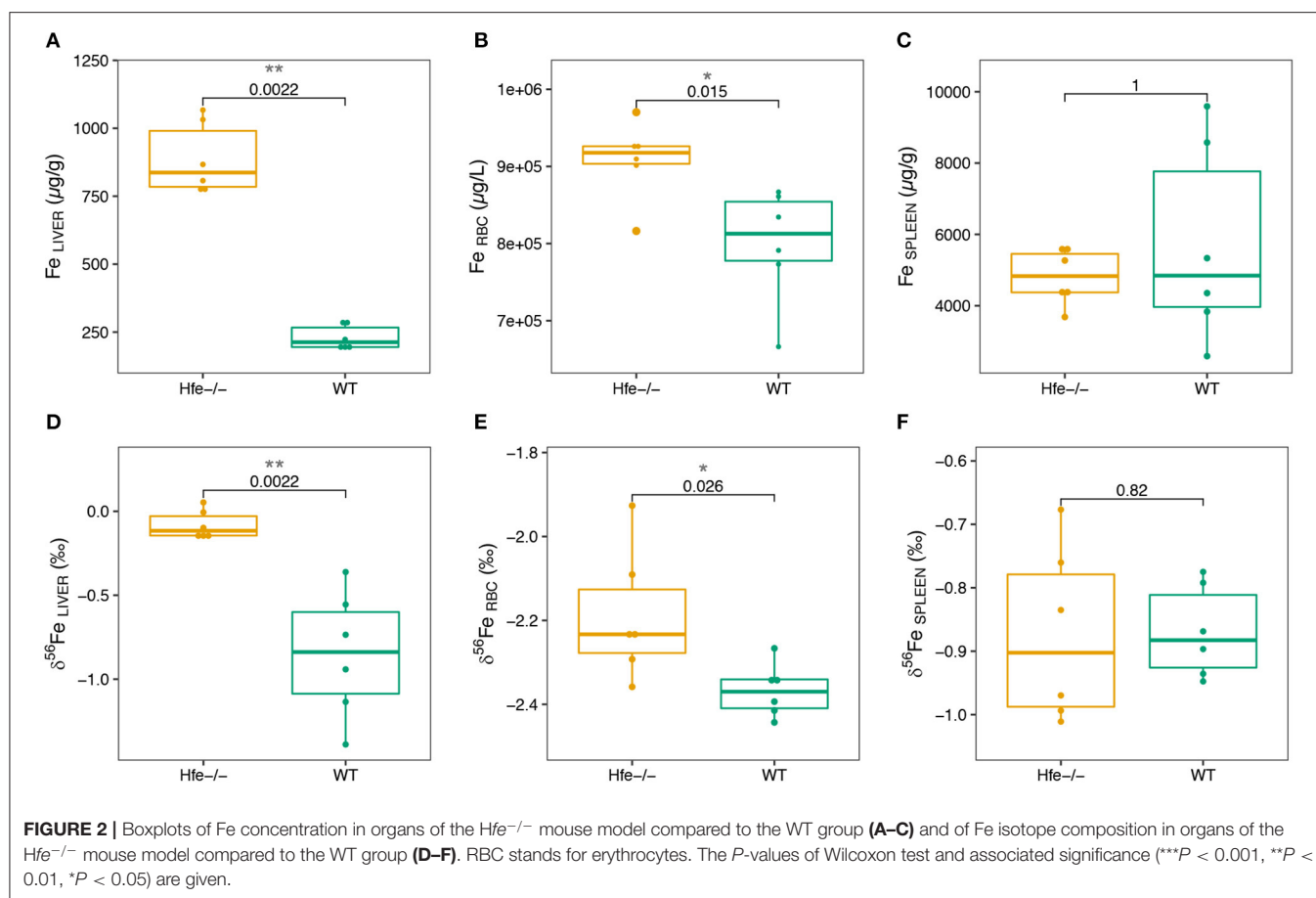
Plasma Fe concentration and unsaturated iron-binding capacity (UIBC) were measured on Cobas 8,000 analyzer (Roche), by colorimetric method using the kits Iron Gen.2-750 tests (Roche) and Unsaturated Iron-Binding Capacity-100 tests (Roche), respectively. Plasma transferrin saturation (%) was then calculated as  $[\text{Fe} / (\text{Fe} + \text{UIBC})] * 100$ .

## Expression of Hepatic Hepcidin

The expression level of hepcidin 1 mRNA transcripts was determined in the liver of WT and *Hfe*<sup>-/-</sup> mice by real time quantitative polymerase chain reaction (RT-PCR). Total liver RNAs were isolated using the Nucleospin 8 RNA (Macherey-Nagel). The mRNAs were reverse transcribed with the M-MLV reverse transcriptase (Promega). The following primers were used to amplify hepcidin 1 (forward: 5'-TTCCCAGTGTGGTATCTGTTGC-3' and reverse: 5'-GGTCAGGATGTGGCTCTAG GC-3'), and TBP (TATA-binding protein) (forward: 5'-AAACTCTGACCACTGCACCG-3' and reverse: 5'-GTGTGGCAGGAGTGATAGGG-3') as references. Real-time quantitative PCR assays were performed using the qPCR MasterMix Plus for SYBR Green I (Eurogentec) and the system StepOne Plus (Real-Time PCR System-Applied Biosystems). All results were analyzed by StepOne Software v2.1 (Applied Biosystems). For each cDNA sample, the difference between the threshold cycle for hepcidin 1 amplification and the threshold cycle for TBP was calculated ( $\Delta\text{Ct}$ ). This enables normalization of the amount of target to the TBP endogenous reference. Values of gene expression were expressed relatively to the control group's mean value ( $\Delta\text{Ct-M}$ ). M corresponds to



**FIGURE 1** | Boxplots of the biological parameters commonly investigated in hereditary hemochromatosis disease measured in the *Hfe*<sup>-/-</sup> mouse model and compared to the WT group. **(A)**, Fe plasma concentration. **(B)**, Transferrin Saturation. **(C)**, Hepcidin Expression. The *P*-values of Wilcoxon test and associated significance (\*\*\**P* < 0.001, \*\**P* < 0.01, \**P* < 0.05) are given.



the  $\Delta\text{Ct}$  mean in the control group (WT mice). Results were expressed as  $[2^{-(\Delta\text{Ct}-M)}] \times 100$  in arbitrary unit (au).

## RESULTS

All the results are given in **Supplementary Tables 1, 2**. We first assess plasma and liver biochemical parameters which are shown in **Figure 1**. As expected, a significant increase of the Fe concentration in plasma (**Figure 1A**), and transferrin saturation (**Figure 1B**) is found in Hfe<sup>-/-</sup> mice, compared to WT mice. Hepatic hepcidin mRNA level is lower in Hfe<sup>-/-</sup> than in WT mice, although the difference does not reach the significance threshold ( $P$ -value = 0.093; **Figure 1C**).

We next explore Fe concentration and isotope composition in liver, erythrocytes and spleen. Results are presented in **Figure 2**; **Supplementary Table 2**. As expected, the hepatic Fe concentration is significantly increased in Hfe<sup>-/-</sup> compared to WT mice (**Figure 2A**). In erythrocytes, the Fe concentration is slightly but significantly increased in Hfe<sup>-/-</sup> compared to WT mice (**Figure 2B**). Iron concentration in spleen is not significantly different between the two groups (**Figure 2C**). The quality of Fe isotopic analysis was assessed by a three isotopes plot (**Supplementary Figure 1**). All the measured isotope ratios form a line indistinguishable within errors from theoretical predictions of both kinetic and thermodynamic isotope fractionation lines,

implying no sizeable contribution of isobaric interferences on the isotopic measurements.

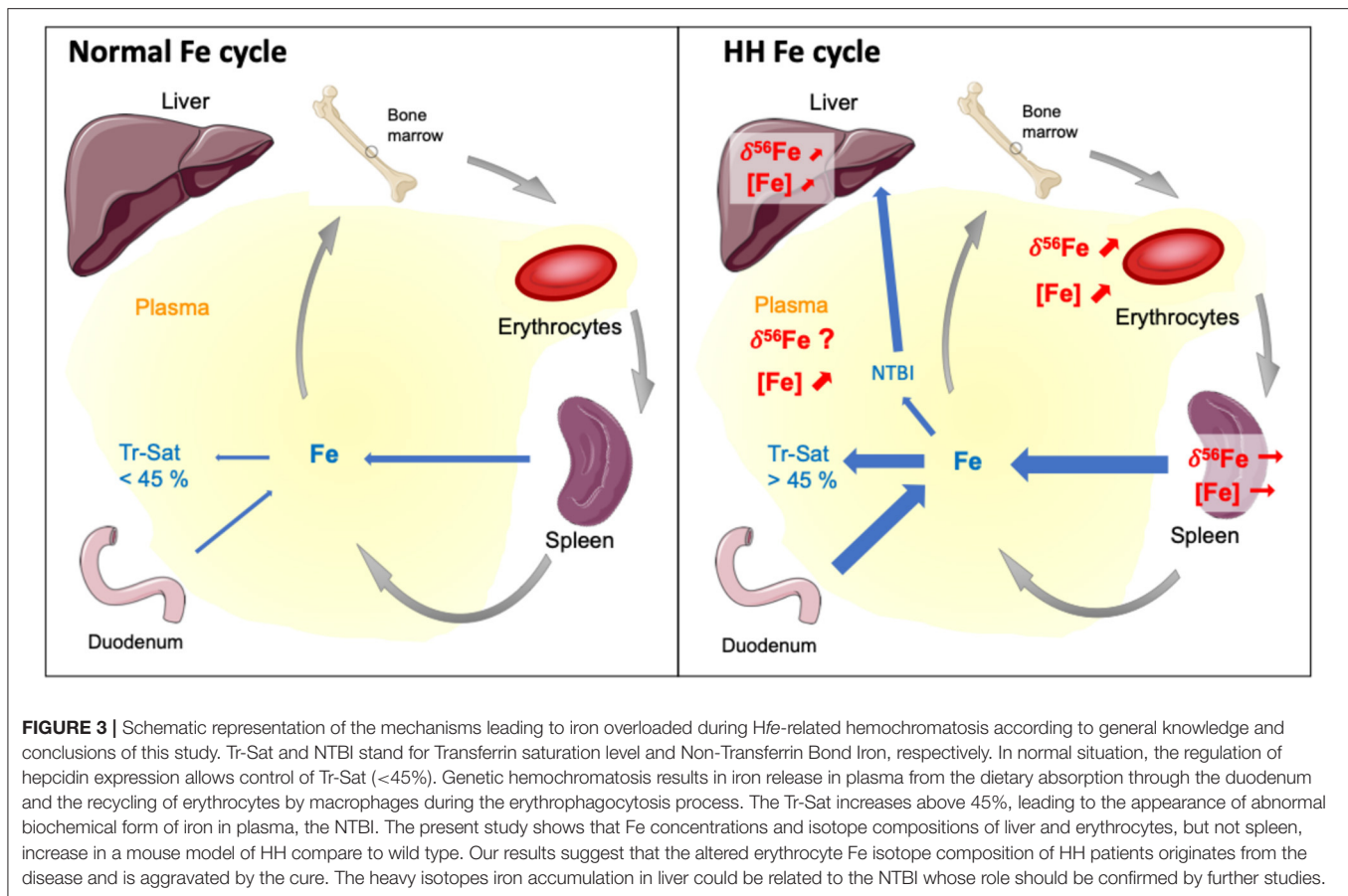
In liver and erythrocytes, the  $\delta^{56}\text{Fe}$  values are significantly more positive in Hfe<sup>-/-</sup> than in WT mice (**Figures 2D,E**; **Supplementary Figure 2**). In spleen, the Fe isotope composition and concentration are not different between the two groups (**Figure 2F**; **Supplementary Figure 2**). Liver and spleen are enriched in heavy Fe isotopes relative to RBC (**Supplementary Figure 2**), consistent with previous studies on WT mice (28), healthy minipigs (29) and human (15, 30).

## DISCUSSION

The biological parameters that we have determined in the Hfe<sup>-/-</sup> mice compared to control animals (**Figure 1**) are consistent with those previously reported in Hfe<sup>-/-</sup> mice and humans during HH (4). The increase of serum Fe concentration and transferrin saturation, together with hepatic but not splenic Fe concentration increase, sign an hepcidin deficiency syndrome, confirmed by the absence of hepatic hepcidin mRNA level expression increase that is expected in condition of Fe overload (3, 4, 7).

Our study shows for the first time that the liver is enriched in Fe heavy isotope in Hfe<sup>-/-</sup> mice compared to control animals (**Figure 2D**). The existence of  $^{56}\text{Fe}$ -enriched hepatic stores in Hfe<sup>-/-</sup> mice might reflect preferential dietary absorption of

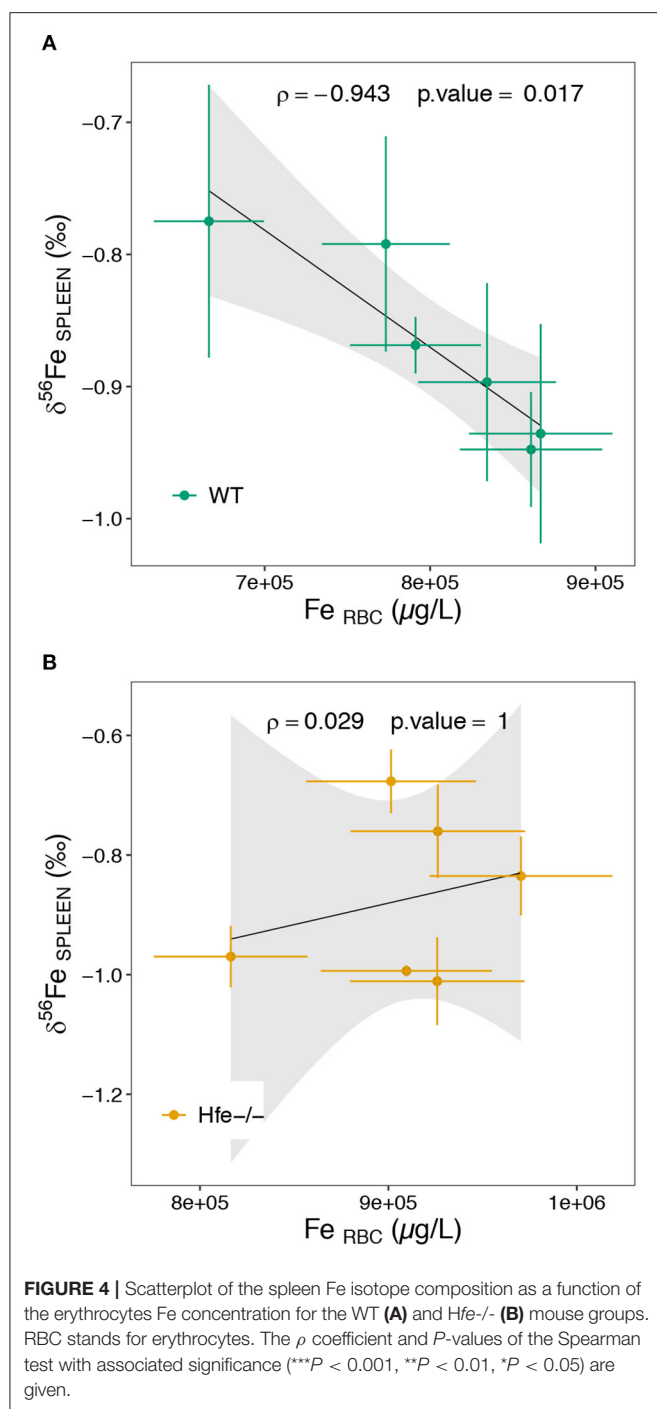




heavy Fe isotopes and their presentation to the liver via the portal circulation. Without being exclusive, we propose that the accumulation of Fe heavy isotopes in liver could also be related to the NTBI known to appear in plasma when transferrin saturation increases during hemochromatosis. A schematic representation of the process implied in Fe overloaded during *Hfe*-related hemochromatosis is given in **Figure 3**. Mechanisms leading to hepatic heavy isotope enrichment could indeed implicate (i) differential Fe isotopic composition between transferrin iron and NTBI chemical forms and/or, (ii) isotope fractionation during the intracellular process following the NTBI cell ingress, including associations with Fe chaperone molecules (31, 32) and ferritin-related oxidative steps (33–35). Interestingly, when Fe is in excess in liver, transferrin Fe uptake is decreased, the expression of transferrin receptor 1 being strongly downregulated. However, NTBI may continue to enter in hepatocytes through the ZIP14 protein that is not downregulated by cellular Fe excess. Thus, in the double knock-out ZIP14 and *Hfe*<sup>-/-</sup> mouse model there is no Fe accumulation in liver (36), which is consistent with the hypothesis of NTBI hepatic accumulation during HH (37). NTBI should be enriched in heavy Fe isotopes to account for the liver isotopic signature. Importantly, in HH patients, it has been reported a rapid increase of the blood  $\delta^{56}\text{Fe}$  value during phlebotomy that cannot be explained by an increase of dietary absorption only (23). Following the above evidence found in

*Hfe*<sup>-/-</sup> mice, we can hypothesize that the rapid increase of blood  $\delta^{56}\text{Fe}$  value of HH patients during phlebotomy (23) could be linked to the release of  $^{56}\text{Fe}$ -enriched hepatic stores necessary for *de novo* erythropoiesis compensating blood subtraction. Indeed, Fe depletion therapy that aims to avoid deleterious consequences of Fe excess on organs is based on the fact that the removal of red blood cells induces erythropoiesis, a process requiring high amounts of iron that are mobilized from iron stores especially in the liver, to compensate the loss of erythrocytes to avoid hypoxia (7). Further studies aiming to analyze animals of different age and/or with iron overloads of other origins will help to better understand the mechanisms involved in the appearance of isotopic fractionation in the liver.

Our study also shows for the first time, to the best of our knowledge, a significant increase of the Fe concentration in RBC of *Hfe*<sup>-/-</sup> compared to WT littermates (**Figure 2A**). This finding is consistent with the slight elevated hemoglobin concentration and inflated volume of erythrocytes reported in HH (38, 39). This increase of Fe concentration in erythrocytes is associated with higher  $\delta^{56}\text{Fe}$  value (**Figure 2E**). In humans, the increase of the whole blood  $\delta^{56}\text{Fe}$  value, which is equivalent to that of erythrocytes (40, 41), has also been observed in HH patients relative to controls, but is significant only for those patients who were treated by phlebotomy (21). The present data, obtained in animals non-expressing the *Hfe* protein, shows



that Fe metabolism dysregulation in HH leads to an increase of the blood  $\delta^{56}\text{Fe}$  value, which could be further aggravated by bloodletting (23).

In spleen, there is no difference in both Fe concentration and isotope composition between Hfe<sup>-/-</sup> and WT groups (Figures 2C,F). Splenic macrophages are part of the reticuloendothelial system, including specialized macrophage cells from spleen, liver and bone marrow, involved in Fe recycling from senescent erythrocytes. Splenic macrophages are thought

to be the most active site of erythrocytes phagocytosis and Fe recycling (42, 43). Under normal physiological conditions, erythrocyte-recycled Fe is either released to the plasma by ferroportin, or stored in macrophages in ferritin if Fe is not needed in plasma. In HH, the hepcidin deficiency allows constant Fe release in plasma, despite Fe excess in plasma and liver. Also, in HH, the spleen is not overloaded such as it is observed here in the Hfe<sup>-/-</sup> mouse. In WT mice, the spleen  $\delta^{56}\text{Fe}$  value is correlated to erythrocytes Fe concentration ( $\rho = -0.94$ , \* $P$ -value = 0.017; Figure 4A). Because erythrocytes have a very negative  $\delta^{56}\text{Fe}$  value ( $\sim -2.4\text{‰}$ ), the amount of senescent erythrocytes in spleen will drive the spleen  $\delta^{56}\text{Fe}$  toward, negative values. This hypothetical inverse association does not exist in Hfe<sup>-/-</sup> mice ( $\rho = 0.03$ ,  $P$ -value = 1; Figure 4B), and suggests that splenic reticuloendothelial cells, despite any obvious pathological expression in HH, have however a dysregulated Fe metabolism, with an apparent decoupling between erythropoiesis and erythrophagocytosis.

Further studies are required to fully depict the abnormal distribution of Fe in the HH disease. Notably, HH is characterized by a systemic accumulation Fe heavy isotope and further research is required to uncover the missing Fe light isotope component, that needs to balance the Fe isotopic budget. Unfortunately, we could not measure the plasma Fe isotope composition due to insufficient volume but this could be a challenge with dedicated and well designated further studies.

## CONCLUSION

The present study shows that the Fe isotope composition of liver and erythrocytes, but not spleen, are altered in a mouse model of HH. The Fe isotopic signature of liver can explain the origin of the increase of the whole blood  $\delta^{56}\text{Fe}$  value as a function of Fe removed by phlebotomy in HH patients, through the release of a Fe heavy isotope-enriched component. Our results suggest that the altered erythrocyte Fe isotope composition of HH patients originates from the disease and is aggravated by the cure. The role of abnormal biochemical forms of Fe, NTBI, that is avidly taken up by hepatocytes should be confirmed by further studies.

## DATA AVAILABILITY STATEMENT

The original contributions presented in the study are included in the article/Supplementary Material, further inquiries can be directed to the corresponding author/s.

## ETHICS STATEMENT

The animal study was reviewed and approved by Comité Rennais d'éthique en matière d'expérimentation animale (CEEA-007).

## AUTHOR CONTRIBUTIONS

OL and VB designed the study. PL performed animal experimentation. TC and MR contributed to ICP elemental analysis and biochemical assays. EA and TC performed isotopic

analysis. EA performed the statistical analysis and wrote the first draft of the manuscript. All authors contributed to manuscript revision, read, and approved the submitted version.

## ACKNOWLEDGMENTS

We thank the two reviewers for their helpful comments on a previous version of the manuscript. This work has been

partly funded by the Mission pour les Initiatives Transverses et Interdisciplinaires of CNRS and the Région Bretagne.

## SUPPLEMENTARY MATERIAL

The Supplementary Material for this article can be found online at: <https://www.frontiersin.org/articles/10.3389/fmed.2021.711822/full#supplementary-material>

## REFERENCES

- Pietrangelo A. Hereditary hemochromatosis — a new look at an old disease. *N Engl J Med*. (2004) 350:2383–97. doi: 10.1056/NEJMra031573
- Witte DL, Crosby WH, Edwards CQ, Fairbanks VF, Mitros FA. Hereditary hemochromatosis. *Clin Chim Acta*. (1996) 62:139–200.
- Andrews NC. Disorders of iron metabolism. *N Engl J Med*. (1999) 341:1986–95. doi: 10.1056/NEJM199912233412607
- Kowdley KV, Brown KE, Ahn J, Sundaram V. ACG clinical guideline: hereditary hemochromatosis. *Am J Gastroenterol*. (2019) 114:1202–18. doi: 10.14309/ajg.0000000000000315
- Muñoz M, García-Erce JA, Remacha ÁF. Disorders of iron metabolism. part II: iron deficiency and iron overload. *J Clin Pathol*. (2011) 64:287–96. doi: 10.1136/jcp.2010.086991
- Ganz T, Nemeth E. Hepcidin and iron homeostasis. *Biochim Biophys Acta*. (2012) 1823:1434–43. doi: 10.1016/j.bbamcr.2012.01.014
- Brissot P, Pietrangelo A, Adams PC, de Graaff B, McLaren CE, Loréal O. Haemochromatosis. *Nat Rev Dis Primer*. (2018) 4:18016. doi: 10.1038/nrdp.2018.16
- Powell LW, Seckington RC, Deugnier Y. Haemochromatosis. *Lancet*. (2016) 388:706–16. doi: 10.1016/S0140-6736(15)01315-X
- Merryweather-Clarke AT, Worwood M, Parkinson L, Mattock C, Pointon JJ, Shearman JD, et al. The effect of HFE mutations on serum ferritin and transferrin saturation in the Jersey population. *Br J Haematol*. (1998) 101:369–73. doi: 10.1046/j.1365-2141.1998.00736.x
- Brissot P, Loréal O. Iron metabolism and related genetic diseases: a cleared land, keeping mysteries. *J Hepatol*. (2016) 64:505–15. doi: 10.1016/j.jhep.2015.11.009
- Brissot P, Ropert M, Le Lan C, Loréal O. Non-transferrin bound iron: a key role in iron overload and iron toxicity. *Biochim Biophys Acta*. (2012) 1820:403–10. doi: 10.1016/j.bbagen.2011.07.014
- Knutson MD. Non-transferrin-bound iron transporters. *Free Radic Biol Med*. (2019) 133:101–11. doi: 10.1016/j.freeradbiomed.2018.10.413
- Loréal O, Cavey T, Robin F, Kenawi M, Guggenbuhl P, Brissot P. Iron as a therapeutic target in HFE-related hemochromatosis: usual and novel aspects. *Pharmaceuticals*. (2018) 11:131. doi: 10.3390/ph11040131
- Andrews NC, Schmidt PJ. Iron homeostasis. *Annu Rev Physiol*. (2007) 69:69–85. doi: 10.1146/annurev.physiol.69.031905.164337
- Walczyk T, von Blanckenburg F. Natural iron isotope variations in human blood. *Science*. (2002) 295:2065–6. doi: 10.1126/science.1069389
- Albarède F, Telouk P, Lamboux A, Jaouen K, Balter V. Isotopic evidence of unaccounted for Fe and Cu erythropoietic pathways<sup>†</sup>. *Metallomics*. (2011) 3:926–33. doi: 10.1039/c1mt00025j
- Van Heghe L, Engström E, Rodushkin I, Cloquet C, Vanhaecke F. Isotopic analysis of the metabolically relevant transition metals Cu, Fe and Zn in human blood from vegetarians and omnivores using multi-collector ICP-mass spectrometry. *J Anal At Spectrom*. (2012) 27:1327–34. doi: 10.1039/c2ja30070b
- Jaouen K, Balter V. Menopause effect on blood Fe and Cu isotope compositions: menopause effect on blood Fe and Cu isotopes. *Am J Phys Anthropol*. (2014) 153:280–5. doi: 10.1002/ajpa.22430
- Jaouen K, Balter V, Herrscher E, Lamboux A, Telouk P, Albarède F. Fe and Cu stable isotopes in archeological human bones and their relationship to sex. *Am J Phys Anthropol*. (2012) 148:334–40. doi: 10.1002/ajpa.22053
- Stenberg A, Malinovsky D, Öhlander B, Andrén H, Forsling W, Engström L-M, et al. Measurement of iron and zinc isotopes in human whole blood: preliminary application to the study of HFE genotypes. *J Trace Elem Med Biol*. (2005) 19:55–60. doi: 10.1016/j.jtemb.2005.07.004
- Krayenbuehl P-A, Walczyk T, Schoenberg R, von Blanckenburg F, Schulthess G. Hereditary hemochromatosis is reflected in the iron isotope composition of blood. *Blood*. (2005) 105:3812–6. doi: 10.1182/blood-2004-07-2807
- Van Heghe L, Delanghe J, Van Vlierberghe H, Vanhaecke F. The relationship between the iron isotopic composition of human whole blood and iron status parameters<sup>†</sup>. *Metallomics*. (2013) 5:1503–9. doi: 10.1039/c3mt00054k
- Hotz K, Krayenbuehl P-A, Walczyk T. Mobilization of storage iron is reflected in the iron isotopic composition of blood in humans. *J Biol Inorg Chem*. (2012) 17:301–9. doi: 10.1007/s00775-011-0851-2
- Hotz K, Walczyk T. Natural iron isotopic composition of blood is an indicator of dietary iron absorption efficiency in humans. *J Biol Inorg Chem*. (2013) 18:1–7. doi: 10.1007/s00775-012-0943-7
- Doyard M, Chappard D, Leroyer P, Roth M-P, Loréal O, Guggenbuhl P. Decreased bone formation explains osteoporosis in a genetic mouse model of hemochromatosis. *PLoS ONE*. (2016) 11:e0148292. doi: 10.1371/journal.pone.0148292
- Cavey T, Ropert M, de Tayrac M, Bardou-Jacquet E, Island M-L, Leroyer P, et al. Mouse genetic background impacts both on iron and non-iron metals parameters and on their relationships. *Biomaterials*. (2015) 28:733–43. doi: 10.1007/s10534-015-9862-8
- Sauzéat L, Costas-Rodríguez M, Albalat E, Mattioli N, Vanhaecke F, Balter V. Inter-comparison of stable iron, copper and zinc isotopic compositions in six reference materials of biological origin. *Talanta*. (2021) 221:121576. doi: 10.1016/j.talanta.2020.121576
- Balter V, Lamboux A, Zazzo A, Télouk P, Leverrier Y, Marvel J, et al. Contrasting Cu, Fe, and Zn isotopic patterns in organs and body fluids of mice and sheep, with emphasis on cellular fractionation. *Metallomics*. (2013) 5:1470. doi: 10.1039/c3mt00151b
- Hotz K, Augsburger H, Walczyk T. Isotopic signatures of iron in body tissues as a potential biomarker for iron metabolism. *J Anal At Spectrom*. (2011) 26:1347–53. doi: 10.1039/c0ja00195c
- Walczyk T, von Blanckenburg F. Deciphering the iron isotope message of the human body. *Int J Mass Spectrom*. (2005) 242:117–34. doi: 10.1016/j.ijms.2004.12.028
- Shi H, Bencze KZ, Stemmler TL, Philpott CC. A cytosolic iron chaperone that delivers iron to ferritin. *Science*. (2008) 320:1207–10. doi: 10.1126/science.1157643
- Patel SJ, Frey AG, Palenchar DJ, Achar S, Bullough KZ, Vashist A, et al. A PCBP1–Bola2 chaperone complex delivers iron for cytosolic [2Fe–2S] cluster assembly. *Nat Chem Biol*. (2019) 15:872–81. doi: 10.1038/s41589-019-0330-6
- Treffry A, Zhao Z, Quail MA, Guest JR, Harrison PM. Dinuclear center of ferritin: studies of iron binding and oxidation show differences in the two iron sites. *Biochemistry*. (1997) 36:432–41. doi: 10.1021/bi961830l
- Fuqua BK, Lu Y, Frazer DM, Darshan D, Wilkins SJ, Dunn L, et al. Severe iron metabolism defects in mice with double knockout of the multicopper ferroxidases hephaestin and ceruloplasmin. *Cell Mol Gastroenterol Hepatol*. (2018) 6:405–27. doi: 10.1016/j.jcmgh.2018.06.006



35. Melman A, Bou-Abdallah F. Iron mineralization and core dissociation in mammalian homopolymeric H-ferritin: current understanding and future perspectives. *Biochim Biophys Acta Gen Subj.* (2020) 1864:129700. doi: 10.1016/j.bbagen.2020.129700
36. Jenkitkasemwong S, Wang C-Y, Coffey R, Zhang W, Chan A, Biel T, et al. SLC39A14 is required for the development of hepatocellular iron overload in murine models of hereditary hemochromatosis. *Cell Metab.* (2015) 22:138–50. doi: 10.1016/j.cmet.2015.05.002
37. Dziuba N, Hardy J, Lindahl PA. Low-molecular-mass iron complexes in blood plasma of iron-deficient pigs do not originate directly from nutrient iron<sup>†</sup>. *Metallomics.* (2019) 11:1900–11. doi: 10.1039/C9MT00152B
38. Barton JC, Bertoli LF, Rothenberg BE. Peripheral blood erythrocyte parameters in hemochromatosis: evidence for increased erythrocyte hemoglobin content. *J Lab Clin Med.* (2000) 135:96–104. doi: 10.1016/S0022-2143(00)70026-6
39. Rehman A, Carroll GJ, Powell LW, Ramm LE, Ramm GA, Olynyk JK. Arthropathy in hereditary haemochromatosis segregates with elevated erythrocyte mean corpuscular volume. *Scand J Rheumatol.* (2021) 50:139–42. doi: 10.1080/03009742.2020.1800081
40. von Blanckenburg F, Oelze M, Schmid DG, van Zuilen K, Gschwind H-P, Slade AJ, et al. An iron stable isotope comparison between human erythrocytes and plasma<sup>†</sup>. *Metallomics.* (2014) 6:2052–61. doi: 10.1039/C4MT00124A
41. Liang Y-H, Huang K-YA, Lee D-C, Pang K-N, Chen S-H. High-precision iron isotope analysis of whole blood, erythrocytes, and serum in adults. *J Trace Elem Med Biol.* (2020) 58:126421. doi: 10.1016/j.jtemb.2019.126421
42. Knutson M, Wessling-Resnick M. Iron metabolism in the reticuloendothelial system. *Crit Rev Biochem Mol Biol.* (2003) 38:61–88. doi: 10.1080/713609210
43. Mebius RE, Kraal G. Structure and function of the spleen. *Nat Rev Immunol.* (2005) 5:606–16. doi: 10.1038/nri1669

**Conflict of Interest:** The authors declare that the research was conducted in the absence of any commercial or financial relationships that could be construed as a potential conflict of interest.

**Publisher's Note:** All claims expressed in this article are solely those of the authors and do not necessarily represent those of their affiliated organizations, or those of the publisher, the editors and the reviewers. Any product that may be evaluated in this article, or claim that may be made by its manufacturer, is not guaranteed or endorsed by the publisher.

Copyright © 2021 Albalat, Cavey, Leroyer, Ropert, Balter and Loréal. This is an open-access article distributed under the terms of the Creative Commons Attribution License (CC BY). The use, distribution or reproduction in other forums is permitted, provided the original author(s) and the copyright owner(s) are credited and that the original publication in this journal is cited, in accordance with accepted academic practice. No use, distribution or reproduction is permitted which does not comply with these terms.