



HAL
open science

Procyclic trypanosomes recycle glucose catabolites and TCA cycle intermediates to stimulate growth in the presence of physiological amounts of proline

Oriana Villafraz, Marc Biran, Erika Pineda, Nicolas Plazolles, Edern Cahoreau, Rodolpho Ornitz Oliveira Souza, Magali Thonnus, Stefan Allmann, Emmanuel Tetaud, Loïc Rivière, et al.

► To cite this version:

Oriana Villafraz, Marc Biran, Erika Pineda, Nicolas Plazolles, Edern Cahoreau, et al.. Procyclic trypanosomes recycle glucose catabolites and TCA cycle intermediates to stimulate growth in the presence of physiological amounts of proline. *PLoS Pathogens*, 2021, 17 (3), pp.e1009204. 10.1371/journal.ppat.1009204. hal-03366686

HAL Id: hal-03366686

<https://cnrs.hal.science/hal-03366686>

Submitted on 5 Oct 2021

HAL is a multi-disciplinary open access archive for the deposit and dissemination of scientific research documents, whether they are published or not. The documents may come from teaching and research institutions in France or abroad, or from public or private research centers.

L'archive ouverte pluridisciplinaire **HAL**, est destinée au dépôt et à la diffusion de documents scientifiques de niveau recherche, publiés ou non, émanant des établissements d'enseignement et de recherche français ou étrangers, des laboratoires publics ou privés.



Distributed under a Creative Commons Attribution 4.0 International License

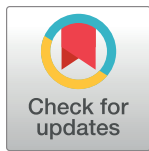
RESEARCH ARTICLE

Procyclic trypanosomes recycle glucose catabolites and TCA cycle intermediates to stimulate growth in the presence of physiological amounts of proline

Oriana Villafraz¹, Marc Biran², Erika Pineda¹, Nicolas Plazolles¹, Edern Cahoreau^{3,4}, Rodolpho Ornitz Oliveira Souza⁵, Magali Thonnus¹, Stefan Allmann⁶, Emmanuel Tetaud¹, Loïc Rivière¹, Ariel M. Silber⁵, Michael P. Barrett^{7,8}, Alena Ziková⁹, Michael Boshart⁶, Jean-Charles Portais^{3,4,10}, Frédéric Bringaud^{1*}

1 Univ. Bordeaux, CNRS, Microbiologie Fondamentale et Pathogénicité (MFP), UMR 5234, Bordeaux, France, **2** Univ. Bordeaux, CNRS, Centre de Résonance Magnétique des Systèmes Biologiques (CRMSB), UMR 5536, Bordeaux, France, **3** Toulouse Biotechnology Institute, TBI-INSA de Toulouse INSA/CNRS 5504-UMR INSA/INRA 792, Toulouse, France, **4** MetaToul-MetaboHub, National Infrastructure of Metabolomics and Fluxomics, Toulouse, France, **5** Laboratory of Biochemistry of Tryps—LaBTryps, Department of Parasitology, Institute of Biomedical Sciences, University of São Paulo, São Paulo, Brazil, **6** Fakultät für Biologie, Genetik, Ludwig-Maximilians-Universität München, Grosshadernerstrasse 2–4, Martinsried, Germany, **7** Wellcome Centre for Integrative Parasitology, Institute of Infection, Immunity and Inflammation, College of Medical, Veterinary and Life Sciences, University of Glasgow, Glasgow, United Kingdom, **8** Glasgow Polyomics, Wolfson Wohl Cancer Research Centre, Garscube Campus, College of Medical Veterinary and Life Sciences, University of Glasgow, Glasgow, United Kingdom, **9** Institute of Parasitology, Biology Center, Czech Academy of Sciences, České Budějovice, Czech Republic, **10** RESTORE, Université de Toulouse, Inserm U1031, CNRS 5070, UPS, EFS, ENVT, Toulouse, France

* frederic.bringaud@u-bordeaux.fr



OPEN ACCESS

Citation: Villafraz O, Biran M, Pineda E, Plazolles N, Cahoreau E, Ornitz Oliveira Souza R, et al. (2021) Procyclic trypanosomes recycle glucose catabolites and TCA cycle intermediates to stimulate growth in the presence of physiological amounts of proline. *PLoS Pathog* 17(3): e1009204. <https://doi.org/10.1371/journal.ppat.1009204>

Editor: Roberto Docampo, University of Georgia Athens, UNITED STATES

Received: December 13, 2020

Accepted: February 9, 2021

Published: March 1, 2021

Copyright: © 2021 Villafraz et al. This is an open access article distributed under the terms of the [Creative Commons Attribution License](https://creativecommons.org/licenses/by/4.0/), which permits unrestricted use, distribution, and reproduction in any medium, provided the original author and source are credited.

Data Availability Statement: All relevant data are within the manuscript and its [Supporting Information](#) files.

Funding: FB was supported by the Centre National de la Recherche Scientifique (CNRS, <https://www.cnrs.fr/>), the Université de Bordeaux (<https://www.u-bordeaux.fr/>), the Agence National de Recherche (ANR, <https://anr.fr/>) through the grants GLYCONOV (grant number ANR-15-CE15-0025-01) and ADIPOTRYP (grant number ANR19-CE15-

Abstract

Trypanosoma brucei, a protist responsible for human African trypanosomiasis (sleeping sickness), is transmitted by the tsetse fly where the procyclic forms of the parasite develop in the proline-rich (1–2 mM) and glucose-depleted digestive tract. Proline is essential for the midgut colonization of the parasite in the insect vector, however other carbon sources could be available and used to feed its central metabolism. Here we show that procyclic trypanosomes can consume and metabolize metabolic intermediates, including those excreted from glucose catabolism (succinate, alanine and pyruvate), with the exception of acetate, which is the ultimate end-product excreted by the parasite. Among the tested metabolites, tricarboxylic acid (TCA) cycle intermediates (succinate, malate and α -ketoglutarate) stimulated growth of the parasite in the presence of 2 mM proline. The pathways used for their metabolism were mapped by proton-NMR metabolic profiling and phenotypic analyses of thirteen RNAi and/or null mutants affecting central carbon metabolism. We showed that (i) malate is converted to succinate by both the reducing and oxidative branches of the TCA cycle, which demonstrates that procyclic trypanosomes can use the full TCA cycle, (ii) the enormous rate of α -ketoglutarate consumption (15-times higher than glucose) is possible thanks to the balanced production and consumption of NADH at the substrate level and (iii) α -ketoglutarate is toxic for trypanosomes if not appropriately metabolized as observed for

0004-01) and the Laboratoire d'Excellence (<https://www.enseignementsup-recherche.gouv.fr/cid51355/laboratoires-d-excellence.html>) through the LabEx ParaFrap (grant number ANR-11-LABX-0024). MB and FB were supported by collaboration funding from BayFrance. MPB was supported by the Wellcome Trust (<http://www.wellcome.ac.uk>) core grant to the Wellcome Centre of Integrative Parasitology (grant number 104111/Z/14/Z). AMS is supported by FAPESP (<https://fapesp.br/>) (grant number 2016/06034-2) and CNPq (grants number 308351/2013-4 and 404769/2018-7). AMS and MPB are funded by a joint FAPESP-MRC/UKRI-NEWTON FUND award (<https://fapesp.br/en/9397/newton-fund-fapesp-mrc-uk-brazil-neglected-infectious-diseases-partnership>): "Bridging epigenetics, metabolism and cell cycle in pathogenic trypanosomatids" (grant number 2018/14432-3), AZ by Grant Agency of the Czech Republic (<https://www.uhk.cz/en/university-of-hradec-kralove/research/programs-projects-and-competitions/grant-agency-of-the-czech-republic>) (grant number 20-14409S) and European Regional Development Fund (ERDF) (https://ec.europa.eu/regional_policy/en/funding/erdf/) (grant number CZ.02.1.01/0.0/0.0/16_019/0000759) and MB was funded by DFG (<https://www.dfg.de/en/>) (grant number SPP1131). JCP from MetaboHub-MetaToul (Metabolomics & Fluxomics facilities, Toulouse, France, <http://www.metatoul.fr>) is supported by the Agence National de Recherche (ANR, <https://anr.fr/>) (grant MetaboHUB-ANR-11-INBS-0010). JCP is grateful to INSERM (<https://www.inserm.fr/>) for funding a temporary full-time researcher position. The funders had no role in study design, data collection and analysis, decision to publish, or preparation of the manuscript.

Competing interests: The authors have declared that no competing interests exist.

an α -ketoglutarate dehydrogenase null mutant. In addition, epimastigotes produced from procyclics upon overexpression of RBP6 showed a growth defect in the presence of 2 mM proline, which is rescued by α -ketoglutarate, suggesting that physiological amounts of proline are not sufficient *per se* for the development of trypanosomes in the fly. In conclusion, these data show that trypanosomes can metabolize multiple metabolites, in addition to proline, which allows them to confront challenging environments in the fly.

Author summary

In the midgut of its insect vector, trypanosomes rely on proline to feed their energy metabolism. However, the availability of other potential carbon sources that can be used by the parasite is currently unknown. Here we show that tricarboxylic acid (TCA) cycle intermediates, *i.e.* succinate, malate and α -ketoglutarate, stimulate growth of procyclic trypanosomes incubated in a medium containing 2 mM proline, which is in the range of the amounts measured in the midgut of the fly. Some of these additional carbon sources are needed for the development of epimastigotes, which differentiate from procyclics in the midgut of the fly, since their growth defect observed in the presence of 2 mM proline is rescued by addition of α -ketoglutarate. In addition, we have implemented new approaches to study a poorly explored branch of the TCA cycle converting malate to α -ketoglutarate, which was previously described as non-functional in the parasite, regardless of the glucose levels available. The discovery of this branch reveals that a full TCA cycle can operate in procyclic trypanosomes. Our data broaden the metabolic potential of trypanosomes and pave the way for a better understanding of the parasite's metabolism in various organ systems of the tsetse fly, where it develops.

Introduction

Trypanosoma brucei is a hemoparasitic unicellular eukaryote sub-species which cause Human African Trypanosomiasis (HAT), also known as sleeping sickness. The disease, fatal if untreated, is endemic in 36 countries in sub-Saharan Africa, with about 70 million people living at risk of infection [1]. The *T. brucei* life cycle is complex and the parasite must adapt to several dynamic environments encountered both in the insect vector, tsetse fly, and in the mammalian hosts. This is accomplished by cellular development, including adaptations of energy metabolism. Here, we focus on the insect stages of the parasite, the midgut procyclic (PCF) and epimastigote forms, by providing a comprehensive analysis of the carbon sources capable of feeding their central metabolism in tissue culture.

In glucose-rich mammalian blood, the metabolism of *T. brucei* bloodstream forms (BSF) relies on glucose, with most of the glycolytic pathway occurring in specialized peroxisomes called glycosomes [2]. BSF convert glucose, their primary carbon source, to the excreted end-product pyruvate, although low but significant amounts of acetate, succinate and alanine are also produced [3,4]. In contrast, the PCF mainly converts glucose to excreted acetate and succinate, in addition to smaller amounts of alanine, pyruvate and lactate [5]. Although PCF trypanosomes prefer to use glucose to support their central carbon metabolism *in vitro* [6,7], they rely on proline metabolism in the fly midgut [8]. This is due to the presumed low abundance, or absence, of free glucose in the hemolymph and tissues of the insect vector, which relies on amino acids for its own energy metabolism [9]. In this particular *in vivo* context, the PCF has

developed an energy metabolism based on proline, which is converted to alanine, succinate and acetate (see Fig 1A) [7,10].

As in other organisms, *T. brucei* PCF catabolism of proline is achieved by oxidation to glutamate, through proline dehydrogenase (PRODH, step 1 in Fig 1) [6] and pyrroline-5 carboxylate dehydrogenase (P5CDH, step 3) [8]. RNAi-mediated downregulation of *P5CDH* expression (RNAi P5CDH) is lethal for the PCF grown in glucose-depleted medium containing 6 mM proline (glucose-depleted conditions) and abolishes fly infections. This demonstrated that proline is essential for growth and development of insect-stage trypanosomes *in vivo* [8]. Proline derived glutamate is then converted, by alanine aminotransferase (AAT, step 4), to the TCA cycle intermediate α -ketoglutarate [11], which is further metabolized to succinate (steps 5–6) and malate (steps 7 and 10) *via* the TCA cycle enzymes working in the oxidative direction [7].

Alternatively, glutamate dehydrogenase, which catalyzes oxidative deamination of glutamate, could also be involved in the production of α -ketoglutarate, as proposed for *T. cruzi*, but this has never been demonstrated in *T. brucei* [12]. Malate is then converted to pyruvate by the malic enzymes (step 15) [13], and serves as a substrate, together with glutamate, for AAT to produce α -ketoglutarate and excreted alanine (step 4). Alternatively, pyruvate is converted by the pyruvate dehydrogenase complex (PDH, step 16) to acetyl-CoA, which is further metabolized into the excreted end-product acetate by two redundant enzymes, *i.e.* acetyl-CoA thioesterase (ACH, step 17) and acetate:succinate CoA-transferase (ASCT, step 18) [14]. It is noteworthy that oxidation of acetyl-CoA through the TCA cycle (dashed lanes in Fig 1A), initiated by production of citrate by citrate synthase (CS, step 12), has not been detected so far in *T. brucei* [15]. Consequently, it is currently considered that the TCA cycle does not work as a cycle in trypanosomes, which only use branches of the TCA cycle fed by anaplerotic reactions [16].

The essential role of proline metabolism to trypanosomes in the insect vector has been well established [8]. However, the utilization of other carbon sources that may be available in the digestive tract and other organs of the insect, as well as the pathways of central carbon metabolism used by trypanosomes *in vivo*, are currently unknown or poorly understood. For instance, the transient availability of glucose for trypanosomes directly following tsetse blood meals could contribute significantly to parasite development in the midgut of the fly. In addition, possible metabolic interactions between trypanosomes and intestinal symbiotic bacteria might also be taken into account, as illustrated by the positive correlation between the presence of facultative symbionts including *Wigglesworthia glossinidia* and *Sodalis glossinidius* and the ability of the tsetse fly to be infected by *T. brucei* [17,18]. Indeed these bacteria have been proposed to create a metabolic symbiosis with *T. brucei* through provision of precursors to threonine biosynthesis [19].

Here we show that PCF metabolizes carbon sources other than glucose and proline, such as succinate, alanine, pyruvate, malate and α -ketoglutarate. Interestingly, the TCA cycle intermediates succinate, malate and α -ketoglutarate stimulate growth of the parasites in *in vivo*-like conditions (2 mM proline [20], without glucose). We also took advantage of the high metabolic rate associated with these TCA cycle intermediates, to study the metabolic capacity of the parasite. This approach provided the first evidence for a complete canonical TCA cycle in PCF trypanosomes.

Results

Procyclic trypanosomes can re-metabolize end-products excreted from glucose degradation

To study the capacity of trypanosomes to metabolize unexpected carbon sources, such as those possibly excreted from the metabolism of the fly microbiota, we developed a model in which

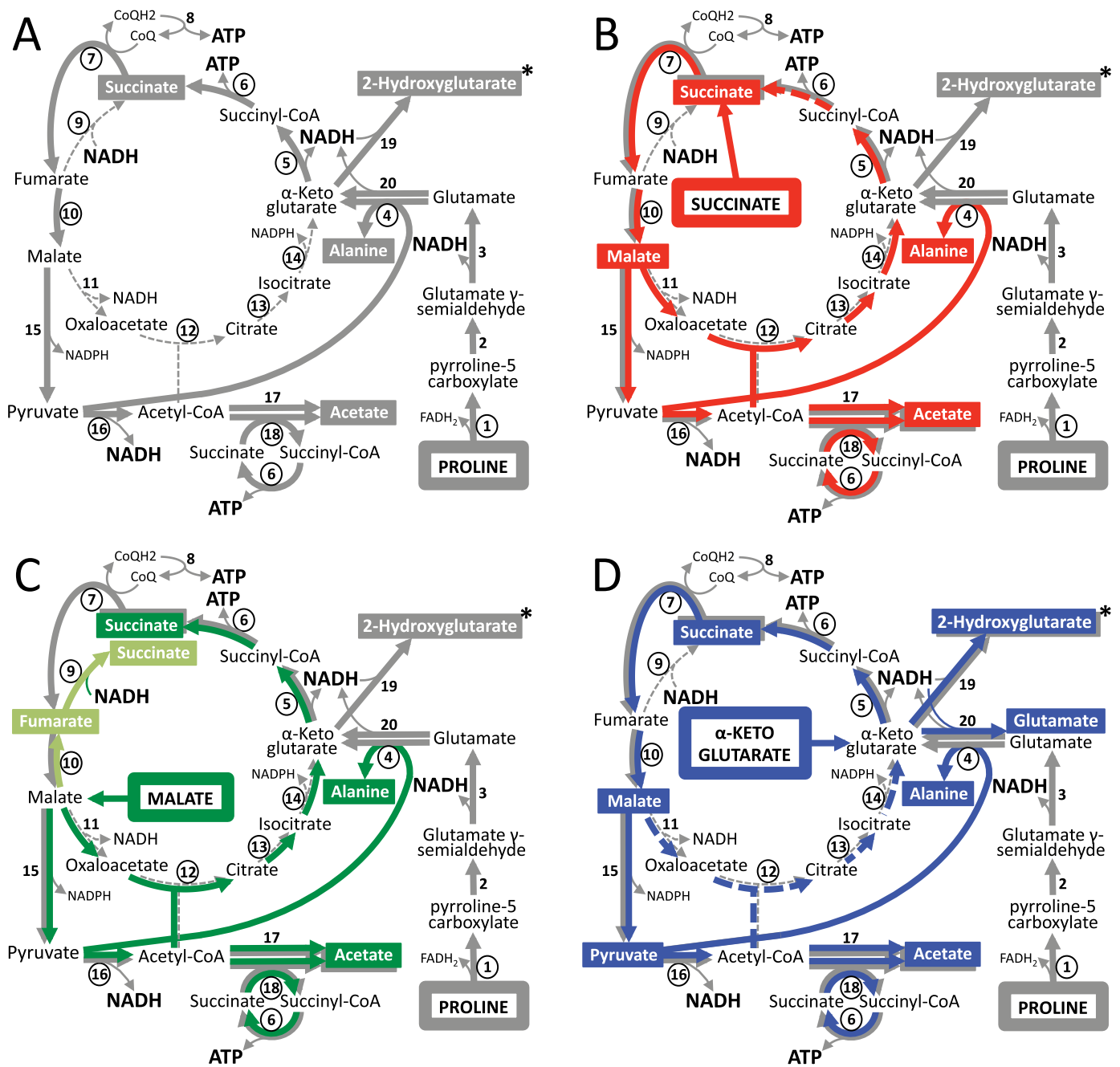


Fig 1. Proline metabolism of the PCF trypanosomes in the presence of other carbon sources. Panels A, B, C and D correspond to schematic metabolic representations of PCF trypanosomes incubated in glucose-depleted medium, containing proline (grey arrows) without or with succinate (red arrows), malate (green arrows) and α -ketoglutarate (blue arrows), respectively. End-products excreted from catabolism of proline and the other carbon sources are shown in rectangles with the corresponding colour code and the enzyme numbers under investigation are circled. Enzymatic reactions of proline metabolism that have not been shown to occur in parental PCF are represented by dashed lines. Similarly, the red (B) and blue (D) dashed arrows highlight that these reactions have not been formally demonstrated to occur in the catabolism of succinate and α -ketoglutarate, respectively. In panel C, enzymatic reactions occurring in the reducing direction of the TCA cycle are shown in light green. The production and consumption of ATP and NADH are indicated in bold and the asterisks mean that production of 2-hydroxyglutarate from proline has not been previously described for PCF. It should be noted that, according to the literature, the TCA cycle does not work as a cycle in trypanosomes and only branches are used through anaplerotic reactions [16]. Indicated enzymes are: 1, proline dehydrogenase (PRODH); 2, spontaneous reaction; 3, pyrroline-5 carboxylate dehydrogenase (P5CDH); 4, alanine aminotransferase (AAT); 5, α -ketoglutarate dehydrogenase complex (KDH); 6, succinyl-CoA synthetase (SCoAS); 7, succinate dehydrogenase (SDH, complex II of the respiratory chain); 8, respiratory chain and mitochondrial ATP synthetase (oxidative phosphorylation); 9, mitochondrial NADH-dependent fumarate reductase (FRDm1); 10, mitochondrial fumarase (FHm); 11, mitochondrial malate dehydrogenase (MDHm); 12, citrate synthase (CS); 13,

aconitase (ACO); 14, mitochondrial isocitrate dehydrogenase (IDHm); 15, mitochondrial malic enzyme (ME_m); 16, pyruvate dehydrogenase complex (PDH); 17, acetyl-CoA thioesterase (ACH); 18, acetate:succinate CoA-transferase (ASCT); 19, unknown enzyme; 20, possibly NADH-dependent glutamate dehydrogenase.

<https://doi.org/10.1371/journal.ppat.1009204.g001>

procyclic trypanosomes (PCF) have the possibility to re-consume partially oxidized metabolites excreted from their own glucose catabolism. It is noteworthy that this model may possibly represent an *in vivo* situation, when established PCF are exposed to a new blood meal of the insect, although the availability of glucose to established trypanosomes is currently unknown. In this experimental model, the parasites were incubated at a high density in PBS containing low amounts of ¹³C-enriched glucose ([U-¹³C]-glucose, 0.5 mM) in the presence or absence of 4 mM proline. The production and possible re-consumption of excreted end-products from the metabolism of [U-¹³C]-glucose and/or non-enriched proline was monitored by analyzing the medium over-time during a 6 h incubation period using the ¹H-NMR profiling approach. This quantitative ¹H-NMR approach was previously developed to distinguish between ¹³C-enriched and non-enriched excreted molecules produced from ¹³C-enriched and non-enriched carbon sources, respectively [21–23]. In these conditions, all glucose is consumed within the first 1.5–2 h (Fig 2A and 2B). When [U-¹³C]-glucose is the only carbon source, PCF convert it to ¹³C-enriched acetate, succinate, alanine and pyruvate, in addition to lower amounts of non-enriched metabolites produced from an unknown internal carbon source (ICS) [21–23]. After 1 h of incubation, net production of ¹³C-enriched succinate and pyruvate stopped while glucose remained in the medium. Interestingly, ¹³C-enriched acetate was still excreted even after glucose depletion, suggesting that acetate was produced from the metabolism of excreted end-products, such as succinate and pyruvate (Fig 2A, top). The same pattern was observed from the non-enriched excreted metabolites produced from the ICS (Fig 2A, low).

Addition of proline strongly stimulated this re-utilization of glucose-derived succinate (Fig 2B, top). In these incubation conditions, glucose-derived pyruvate was no longer excreted since it is used as a substrate by alanine aminotransferase (AAT, step 4 in Fig 1A) to convert proline-derived glutamate to α -ketoglutarate [7]. Alanine was also re-used, although with a 2.5 h delay compared to succinate. This re-utilization was also seen for proline-derived succinate (Fig 2B, low) as proline-derived acetate increased at the expense of succinate after 4.5 h of incubation. Combined, these data suggested that glucose-derived and/or proline-derived succinate, pyruvate and to a lower extent alanine can be re-utilized and converted to acetate.

Since acetate is produced by both the acetate:succinate CoA-transferase (ASCT, step 18 in Fig 1A) and the acetyl-CoA thioesterase (ACH, step 17), the role of the acetate branch in the further metabolism of excreted end-products was addressed. The same time-course was conducted on a Δach^{RNAi} ASCT double mutant (the origin and type of all mutant cell lines used in this study are listed in Table 1), in which ASCT expression was knocked down by RNAi in the null ACH background. After 2 days of incubation, the tetracycline induced Δach^{RNAi} ASCT (Δach^{RNAi} ASCT.i) cell line showed an 80% reduction in acetate production from glucose metabolism, compared to the parental cell line (Fig 2B and 2C), which is consistent with the 90% reduction in acetate excretion previously described for this cell line [21]. The residual acetate production was attributed to incomplete downregulation of ASCT expression, although ASCT could not be detected by Western blot [21] (Fig 2C). The excretion of glucose-derived pyruvate in the Δach^{RNAi} ASCT.i mutant relates to the limited capacity of the acetate branch. Interestingly, succinate and pyruvate excreted during the first hour of incubation are re-consumed and converted to acetate and alanine, indicating that alanine is the ultimate excreted end-product when the acetate branch is limiting (Fig 2C).

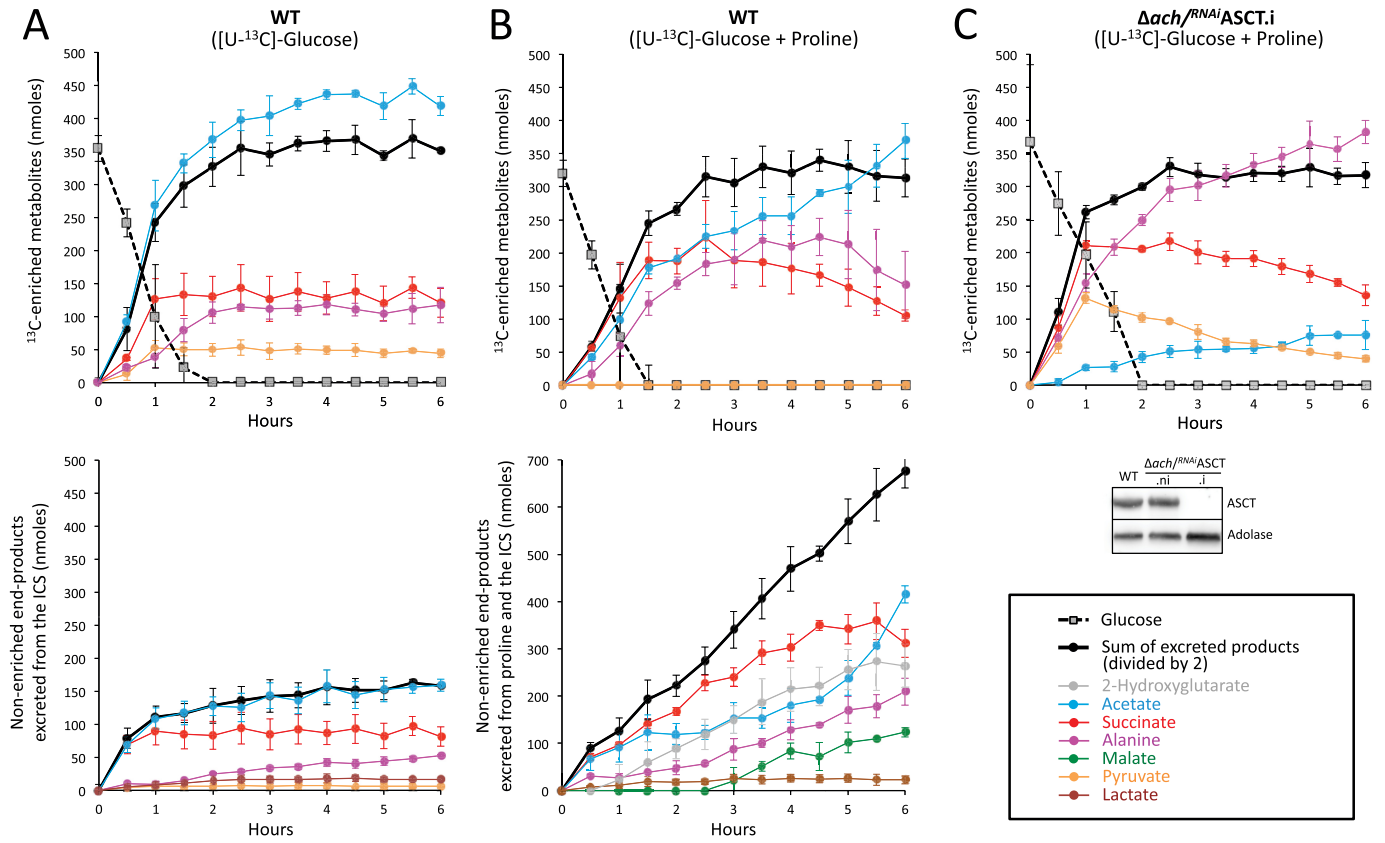


Fig 2. Kinetic analyses of end-products excretion from [U-¹³C]-glucose and proline metabolism. PCF cells were incubated for 6 h in PBS containing 0.5 mM [U-¹³C]-glucose in the presence (panel B) or not (panel A) of 4 mM non-enriched proline (Pro). Excreted end-products were analyzed in the spent medium every 0.5 h by ¹H-NMR spectrometry. The top panels A and B show the amounts of ¹³C-enriched end-products excreted from [U-¹³C]-glucose metabolism and the amounts of glucose present in the spent medium. The bottom panels show the amounts of non-enriched end-products produced from the metabolism of the unknown internal carbon source (ICS) (panel A) or from the metabolism of proline plus the unknown ICS (panel B). In panel C, the kinetics of end-products excreted from 0.5 mM [U-¹³C]-glucose in the presence of 4 mM proline was determined for the *Δdch1^{RNAi}ASCT.i* mutant cell line as performed in panel B. Western blot controls with the anti-ASCT and anti-aldolase immune sera are shown below the graph.

<https://doi.org/10.1371/journal.ppat.1009204.g002>

Succinate, pyruvate and alanine are metabolized in the presence of glucose or proline

To determine how the main end-products excreted from glucose catabolism (succinate, alanine, pyruvate or acetate) are metabolized in the presence or absence of glucose or proline we analyzed, by quantitative ¹H-NMR, the exometabolome of PCF incubated with [U-¹³C]-succinate, [U-¹³C]-alanine, [U-¹³C]-pyruvate or [U-¹³C]-acetate in the presence or absence of equal amounts of non-enriched glucose or proline. Succinate was poorly consumed alone, however, the presence of glucose or proline stimulates its consumption by 3.6- and 4.6-fold, respectively (Fig 3A). This is consistent with the increased conversion of glucose-derived succinate to acetate, in the presence of proline (Fig 2A and 2B). The quantities of excreted end-products from proline catabolism were reduced only by 8% in the presence of succinate, compared to a 53% reduction in the presence of glucose (Fig 3A). This suggests that, in contrast to the previously reported glucose-induced downregulation of proline metabolism [6,7], succinate addition does not limit the rate of proline metabolism. In the presence of [U-¹³C]-proline, succinate is converted to malate, acetate, alanine and traces of fumarate, which represent 40.5%, 43.2%, 16.4% and 1.5% of the excreted end-products, respectively (Fig 3B). According to the current

Table 1. Strategies and plasmids used for gene knock down (RNAi), knock out (KO) and/or overexpression in the cell lines analyzed.

Cell line	Targeted gene(s)	Strategy / plasmid	Publication
Δ ach/ ^{RNAi} ASCT	Acetyl-CoA thioesterase Acetate:succinate CoA-transferase	KO (classical allele deletion) RNAi / pLew100	[21]
^{RNAi} SDH	Succinate dehydrogenase	RNAi / pLew100	[7]
^{RNAi} PDH-E2	E2 subunit of the pyruvate dehydrogenase complex	RNAi / pLew100	[7]
^{RNAi} FRDg/m1	Glycosomal and mitochondrial NADH-dependent fumarate reductases	RNAi / pLew100	[24]
^{RNAi} FHc/m	Cytosolic and mitochondrial fumarases	RNAi / p2T7 ^{Ti} -177	[25]
Δ aco	Aconitase	KO (classical allele deletion)	[15]
^{RNAi} AAT	Alanine aminotransferase	RNAi / pLew100	[11]
^{RNAi} PRODH	Proline dehydrogenase	RNAi / p2T7 ^{Ti} -177	[6]
Δ kdh-e2	E2 subunit of the α -ketoglutarate dehydrogenase complex	KO (classical allele deletion)	This work
^{RNAi} SCoAS	Succinyl-CoA synthetase	RNAi / p2T7 ^{Ti} -177	This work
Δ idhm	Mitochondrial isocitrate dehydrogenase	KO (classical allele deletion)	This work
Δ kdh-e2/ ^{RNAi} IDHm	E2 subunit of the α -ketoglutarate dehydrogenase complex and Mitochondrial isocitrate dehydrogenase	KO (classical allele deletion) RNAi / p2T7 ^{Ti} -177	This work
Δ idhm/ ^{RNAi} SCoAS	Mitochondrial isocitrate dehydrogenase and Succinyl-CoA synthetase	KO (classical allele deletion) RNAi / p2T7 ^{Ti} -177	This work
^{OE} RBP6	RNA binding protein 6	Overexpression / pLew100	[23]

<https://doi.org/10.1371/journal.ppat.1009204.t001>

metabolic model, succinate enters the tricarboxylic acid (TCA) cycle where it is converted to fumarate by succinate dehydrogenase (SDH, step 7 in Fig 1B) and to malate by the mitochondrial fumarase (FHm, step 10). The malic enzymes then produce pyruvate (ME_m, step 15 and the cytosolic ME_c not shown), which feeds the AAT (step 4) for production of alanine, or the pyruvate dehydrogenase (PDH) complex plus the ACH/ASCT steps (steps 17 and 18) for production of acetate. In agreement with this model, extracellular succinate and proline-derived succinate were no longer metabolized to acetate in the ^{RNAi}SDH.i cell line (Fig 3B). As expected, acetate production from succinate, as well as from proline, was abolished in the tetracycline-induced PDH subunit E2 RNAi mutant cell line (^{RNAi}PDH-E2.i). The effective block of PDH activity is reflected by the increased excretion of succinate-derived pyruvate, the substrate of the PDH complex (Fig 3B).

[U-¹³C]-Alanine was poorly metabolized alone, but addition of glucose or proline considerably stimulated its consumption, with the production of ¹³C-enriched end-products being 23-fold and 10-fold increased, respectively (Fig 3A). ¹³C-enriched acetate represents 100% and 82% of the excreted end-products from [U-¹³C]-alanine in the presence of proline and glucose, respectively (S1 Table). [U-¹³C]-Pyruvate was converted to ¹³C-enriched alanine and acetate in the presence or absence of glucose or proline. The rate of end-product excretion was only increased by 35% and 17% in the presence of glucose and proline, respectively (Fig 3A). In contrast, no ¹³C-enriched molecules were detected by ¹H-NMR in the exometabolome of PCF incubated with [U-¹³C]-acetate, in the presence or absence of glucose or proline, suggesting that acetate is not further metabolized through the central metabolism (Fig 3A). Together, these data show that acetate is the ultimate excreted end-product of the metabolism of glucose and other carbon sources, while succinate, pyruvate and alanine, which are also excreted, can be re-utilized and converted to acetate.

TCA cycle intermediates stimulate growth of the PCF in the presence of physiological amounts of proline

The midgut of the tsetse fly, the natural environment of PCF, lacks glucose between blood meals and contains proline in the low mM range (1–2 mM) [20], which is used by the parasite

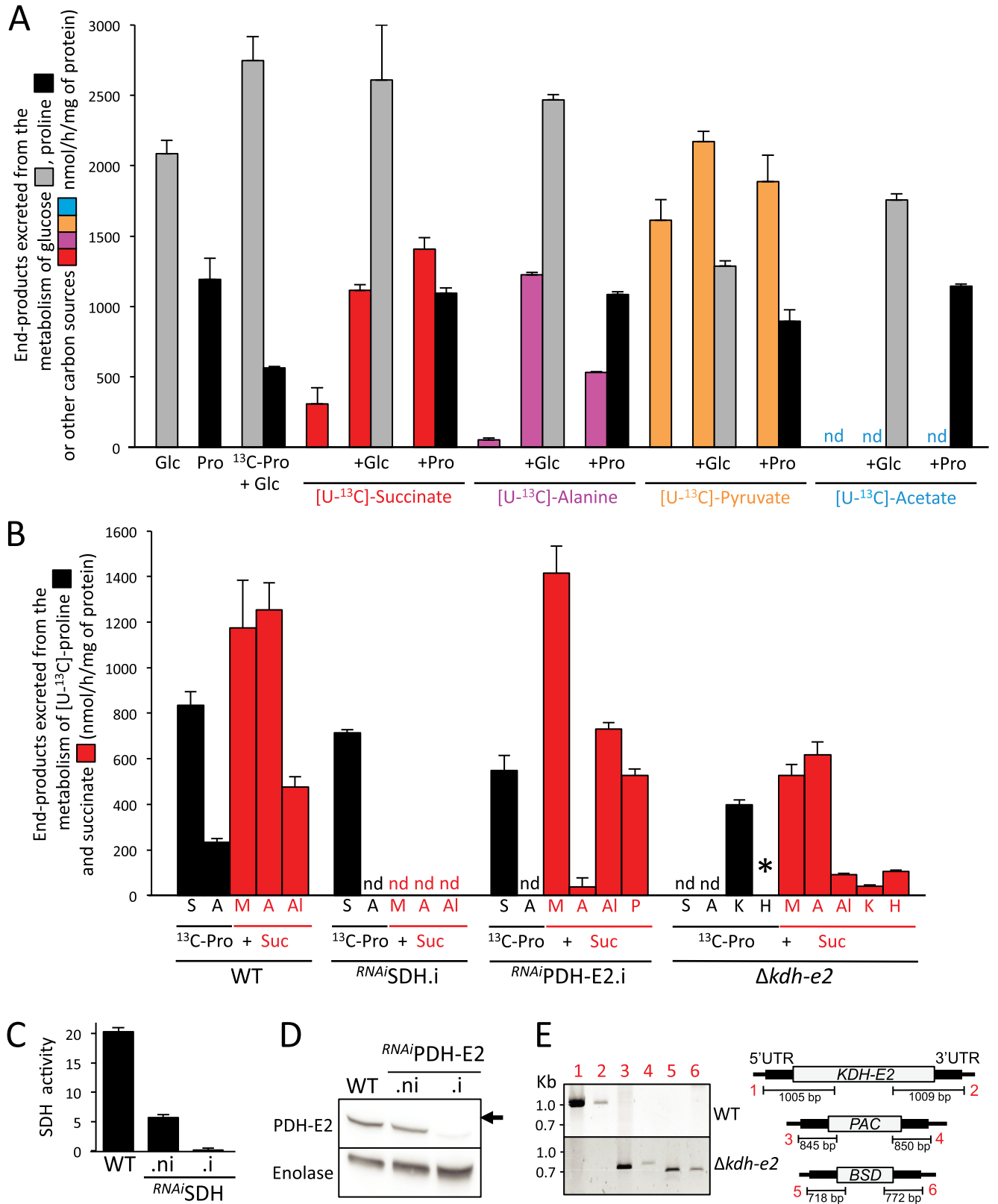


Fig 3. Proton (^1H) NMR analyses of end-products excreted from the metabolism of ^{13}C -enriched succinate, alanine, pyruvate and acetate. In panel A, PCF trypanosomes were incubated for 6 h in PBS containing 4 mM [^{13}C]-succinate, [^{13}C]-alanine, [^{13}C]-pyruvate or [^{13}C]-acetate alone or in combination with 4 mM glucose (+Glc) or proline (+Pro) before analysis of the spent medium by ^1H -NMR spectrometry. As reference, the same experiment was performed with 4 mM proline (Pro), 4 mM glucose (Glc) or 4 mM glucose with 4 mM [^{13}C]-proline (^{13}C -Pro). The amounts of each end-product excreted are documented in S1 Table. Panel B shows equivalent ^1H -NMR spectrometry experiments performed on the parental (WT), $^{\text{RNAi}}\text{SDH.i}$, $^{\text{RNAi}}\text{PDH-E2.i}$ and $\Delta\text{kdh-e2}$ cell lines incubated with 4 mM [^{13}C]-proline and 4 mM succinate. Because of high background, ^{13}C -enriched 2-hydroxyglutarate produced from [^{13}C]-proline cannot be quantified, however, it is detectable in the $\Delta\text{kdh-e2}$ cell line as indicated by an asterisk (*). Traces of fumarate produced from these carbon sources are not shown in the figure. Abbreviations: A, acetate; Al, alanine; H, 2-hydroxyglutarate; K, α -ketoglutarate; M, malate; P, pyruvate; S, succinate; nd, not detectable; *, detectable but not quantifiable. The efficiency of RNAi-mediated downregulation of SDH and PDH-E2 expression in the tetracycline-induced (i) or non induced (ni) cell line, as well as in the parental cell line (WT), was determined by SDH activity assays (panel C) and Western blotting with the anti-PDH-E2 and anti-enolase (control) immune sera (panel D). Panel E shows a PCR analysis of genomic DNA isolated from the parental (WT) and $\Delta\text{kdh-e2}$ cell line. Lanes 1 to 6 of the gel picture correspond to different PCR products described in the right panel. As expected, PCR amplification of the *KDH-E2* gene (lanes 1–2) was only observed in the parental cell line, while *PAC* and *BSD* PCR-products were observed only in the $\Delta\text{kdh-e2}$ mutant (lanes 3–4 and 5–6, respectively).

<https://doi.org/10.1371/journal.ppat.1009204.g003>

for its energy metabolism [8]. To determine if succinate, alanine, acetate, pyruvate and lactate stimulate growth of the parasite in insect-like conditions, we estimated the growth of the PCF trypanosomes as a function of increasing concentrations of these metabolites in the glucose-depleted SDM79 medium containing 2 mM proline, using the Alamar Blue assay, as previously described [23]. Among them, succinate (1 to 10 mM) was able to stimulate growth, with a maximum effect at 10 mM, while pyruvate showed a moderate effect (S1 Fig). This succinate-dependent growth stimulation is observed in the presence of up to 2 mM proline, but not in high-proline conditions (12 mM) (Fig 4A). As controls, 1 to 20 mM proline stimulated growth in the presence of 0.2 mM and 2 mM proline, but not in the presence of 12 mM proline. Among six other TCA cycle intermediates tested plus glutamate and aspartate, malate and α -ketoglutarate also stimulated growth in the presence of 2 mM proline (and 0.2 mM), with a maximum effect on growth also at 10 mM (Figs 4A and S1). This growth stimulation was confirmed by performing growth curves on cells maintained in the exponential growth phase (between 10^6 and 10^7 cells/ml) over 15 days in the presence of 2 mM proline and 10 mM of succinate, malate or α -ketoglutarate (Fig 4B). In the presence of these metabolites the culture doubling time was reduced by approximately 1.2 fold, with an increased growth rate compared to that using 2 mM proline alone. As observed for succinate, ^1H -NMR analyses of excreted end-products from the metabolism of malate and α -ketoglutarate showed that the addition of equimolar amounts of [^{13}C]-proline induced an increase of the rate of malate and α -ketoglutarate consumption by 5.7 and 6.6 fold, respectively (Fig 4C). 6.9 and 2.8 fold increases of malate and α -ketoglutarate consumption were seen with [^{13}C]-glucose, respectively.

The effect of succinate, malate and α -ketoglutarate was also determined on PCF grown in glucose-rich conditions. At most, succinate, α -ketoglutarate and the proline control have a minor stimulatory effect in the presence of 2 mM or 12 mM glucose (2 mM proline) (Fig 4A and 4B). However, addition of 10 mM malate to PCF grown in the presence 2 mM glucose slightly slowed growth of the parasite (Fig 4B). Malate was consumed 22% more in glucose-rich than in glucose-depleted conditions and its presence induced a 27% reduction of glucose consumption (Fig 4C), suggesting that switch to partial malate metabolism is less efficient than catabolism of glucose alone.

The TCA cycle is used to metabolize malate in procyclic trypanosomes

^1H -NMR spectrometry analyses showed that, in the presence of proline, malate is converted in almost equal amounts to fumarate and succinate (35.9% and 38.6% of the excreted end-products), in addition to alanine and acetate (14.9% and 10.6% of the excreted end-products) (Fig 5A). According to the current view, malate is converted by the malic enzymes to pyruvate (step 15 in Fig 1C), a precursor for the production of alanine and acetate, as described above (steps 4 and 16–18). As observed for the metabolism of succinate, production of acetate from

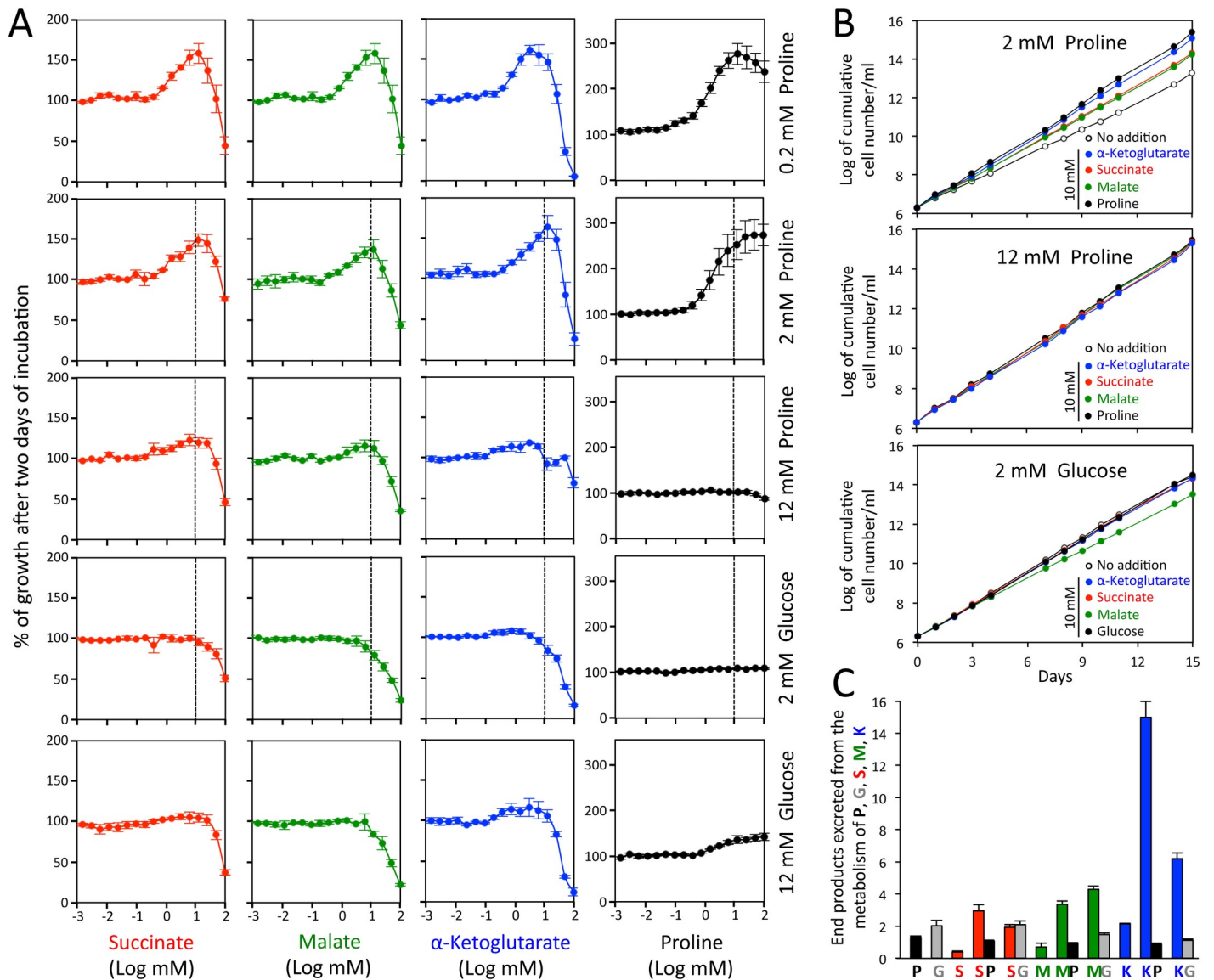


Fig 4. Succinate, malate and α -ketoglutarate stimulate growth of the PCF. Panel A shows growth of the PCF trypanosomes in the glucose-depleted SDM79 medium containing 0.2 mM, 2 mM (low-proline) or 12 mM (high-proline) proline, 2 mM glucose/2 mM proline (low-glucose) or 12 mM glucose/2 mM proline (high-glucose) in the presence of added 10 μ M to 100 mM succinate, malate, α -ketoglutarate or proline, using the Alamar Blue assay. Incubation was started at 2×10^6 cell density and the Alamar Blue assay was performed after 48 h at 27°C. The dashed line indicates the concentrations of succinate, malate, α -ketoglutarate or proline (10 mM) used in panel B, which shows growth curves of the PCF in low-proline, high-proline and low-glucose conditions in the presence or not of 10 mM of each metabolite. Cells were maintained in the exponential growth phase (between 10^6 and 10^7 cells/ml), and cumulative cell numbers reflect normalization for dilution during cultivation. In panel C, the PCF trypanosomes were incubated for 6 h in PBS containing 4 mM succinate (S), malate (M) or α -ketoglutarate (K), in the presence or absence of 4 mM [U - ^{13}C]-proline (P) or [U - ^{13}C]-glucose (G), before analysis of the spent medium by 1H -NMR spectrometry. As a control, the cells were also incubated with 4 mM [U - ^{13}C]-proline (P) or [U - ^{13}C]-glucose (G) alone. The amounts of end-products excreted from the metabolism of proline (black), glucose (grey), succinate (red), malate (green) and α -ketoglutarate (blue) are expressed as μ mol excreted/h/mg of protein.

<https://doi.org/10.1371/journal.ppat.1009204.g004>

malate is abolished in the $RNAi$ PDH-E2.i cell line (Fig 5A), with an accumulation of malate-derived pyruvate and alanine. Malate can also be converted by FHM to fumarate (step 10), which is further reduced to succinate by the mitochondrial NADH-dependent fumarate

reductase (FRDm1, step 9). It is to note that the cytosolic (FHC) and glycosomal (FRDg) isoforms of these two enzymes, respectively, could also be involved in succinate production [24,25], justifying the use of the ^{RNAi}FRDg/m1.i and ^{RNAi}FHC/m.i double mutants to study the production of succinate from malate. Succinate production from malate was reduced but not abolished in either of these two double mutants, suggesting that PCF uses an alternative pathway in addition to this reducing branch (Fig 5A). Indeed, malate is also reduced to succinate by TCA cycle enzymes (steps 11–14 and 5–6), as inferred by diminished secretion of malate-derived succinate in the Δ aco (aconitase, step 13) and Δ kdh-e2 (α -ketoglutarate dehydrogenase subunit E2, step 5) mutant cell lines (Fig 5A). Two other lines of evidence supported the utilization of the oxidative branch of the TCA cycle to produce succinate. First, the Δ kdh-e2 null mutant excreted α -ketoglutarate from malate metabolism. Second, the expected abolition of fumarate production from malate in the ^{RNAi}FHC/m.i double mutant (Fig 5A), implies that the malate-derived succinate cannot be produced by the fumarate reductase activity, but by the TCA cycle activity. The relatively high flux of malate consumption is probably the consequence of an efficient maintenance of the mitochondrial redox balance, with NADH molecules produced in the oxidative branches (succinate production through the TCA cycle and acetate production) being reoxidized, at least in part, by the reductive branch (succinate production by fumarate reductases). This resembles the malate dismutation phenomenon well described in anaerobic parasites (for reviews see [26,27]). It is of note that, in the presence of proline, succinate was also converted to succinyl-CoA and probably to succinate through the TCA cycle as inferred by the accumulation of excreted non-enriched α -ketoglutarate in the Δ kdh-e2 null mutant incubated with succinate and [U-¹³C]-proline (Figs 1B and 3B). These data confirmed that the TCA cycle operates as a complete cycle in these growth conditions.

Metabolism of α -ketoglutarate in the presence of proline

To our surprise, ¹H-NMR spectrometry analyses of α -ketoglutarate metabolism showed that its rate of consumption in the presence of equal amounts (4 mM) of proline (~15 μ mole/h/mg of protein) is ~15-times higher compared to that of glucose (~1 μ mole/h/mg of protein), the latter having previously been considered as the most rapidly degraded carbon source by PCF trypanosomes [6]. As observed for the metabolism of succinate and malate, the rate of α -ketoglutarate catabolism is increased in the presence of proline or glucose (Fig 4C). In the presence of proline, α -ketoglutarate is mainly converted to equivalent amounts of succinate and 2-hydroxyglutarate (45.5% and 37.2% of the excreted end-products, respectively), with significant amounts of glutamate (8.7%), acetate (3.6%), pyruvate (3.1%) and malate (1.6%), as well as less than 1% of alanine and lactate (Fig 5B). The production of 2-hydroxyglutarate and glutamate from α -ketoglutarate was validated by comparing the exometabolome of the PCF incubated with [U-¹³C]-proline or [U-¹³C]-proline/ α -ketoglutarate with 2-hydroxyglutarate and glutamate standards (S2 Fig). According to the current model, succinate is produced from α -ketoglutarate by the successive action of α -ketoglutarate dehydrogenase (KDH, step 5 in Fig 1D) and succinyl-CoA synthetase (SCoAS, step 6). Succinate then feeds production of malate, pyruvate, alanine and acetate (Fig 1D, O for other in Fig 5B), as evidenced by their absence in the exometabolome of the ^{RNAi}SDH.i cell line incubated with [U-¹³C]-proline and α -ketoglutarate (Fig 5B).

The Δ kdh-e2 null mutant excretes only 2-hydroxyglutarate from metabolism of α -ketoglutarate, suggesting that a single reduction step, catalyzed by an as yet unknown enzyme, produces 2-hydroxyglutarate from α -ketoglutarate [28,29]. It has recently been proposed that 2-hydroxyglutarate detected in the *T. brucei* BSF metabolome results from the promiscuous action of the NADH-dependent malate dehydrogenase on α -ketoglutarate [30].

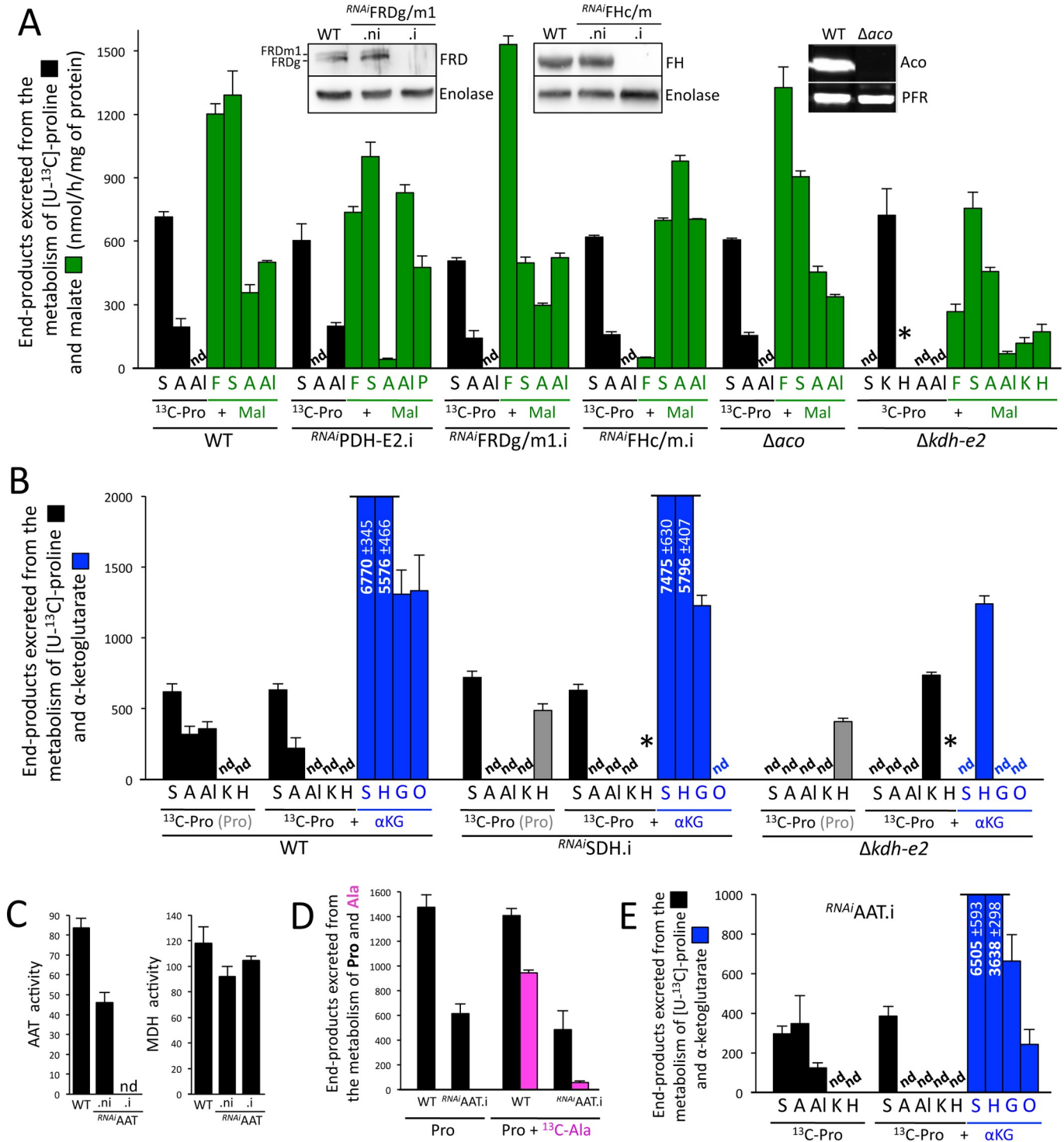


Fig 5. ¹H-NMR analyses of end-products excreted from the metabolism of malate and α -ketoglutarate. Panel A shows ¹H-NMR spectrometry analyses of the exometabolome produced by the parental (WT), *RNAi*PDH-E2.i, *RNAi*FRDg/m1.i, *RNAi*Fhc/m.i, Δ aco and Δ kdh-e2 cell lines incubated with 4 mM [U-¹³C]-proline (¹³C-Pro) and 4 mM malate (Mal). The insets show Western blot analyses with the immune sera indicated in the right margin of the parental (WT), the tetracycline-induced (i) and

non-induced (.ni) ^{RNAi}FRDg/m1 and ^{RNAi}FHc/m cell lines, and the Δ aco cell line. Panel B is equivalent to panel A with the parental (WT), ^{RNAi}SDH.i and Δ kdh-e2 cell lines incubated in the presence of [U-¹³C]-proline alone (¹³C-Pro) or with α -ketoglutarate (¹³C-Pro + α KG). Because of high background, ¹³C-enriched 2-hydroxyglutarate produced from [U-¹³C]-proline cannot be quantified, however, asterisks (*) mean that it is detectable. Since the amounts of 2-hydroxyglutarate produced from non-enriched proline are quantifiable, the values are indicated with grey columns when applicable. The excreted amounts are indicated in the truncated columns (nmol/h/mg of protein). The AAT and MDH (control) enzymatic activities of the parental (WT) and the tetracycline-induced (.i) and non-induced (.ni) ^{RNAi}AAT cell lines are shown in panel C. In panel D, the WT and ^{RNAi}AAT.i cells were incubated for 6 h in PBS containing 4 mM proline (Pro) with or without 4 mM [U-¹³C]-alanine (¹³C-Ala), before analysis of the spent medium by ¹H-NMR spectrometry. The amounts of end-products excreted from the metabolism of proline (black) and alanine (pink) are expressed as μ mol excreted/h/mg of protein. Panel E is equivalent to panel B, except that the ^{RNAi}AAT.i is analyzed. Abbreviations: A, acetate; Al, alanine; F, fumarate; G, glutamate; H, 2-hydroxyglutarate; K, α -ketoglutarate; nd, not detectable; M, Malate; O, malate + pyruvate + acetate + alanine; S, succinate; *, detected but not quantifiable.

<https://doi.org/10.1371/journal.ppat.1009204.g005>

2-hydroxyglutarate is also produced from malate and succinate by the Δ kdh-e2 null mutant (Figs 3B and 5A). In addition, revisiting ¹H-NMR spectrometry data showed that 2-hydroxyglutarate is also excreted by the parental PCF from proline metabolism in the presence of glucose, but not in its absence (Fig 2B). It is noteworthy that ¹³C-enriched 2-hydroxyglutarate molecules produced from [U-¹³C]-proline are barely detectable due to high background and observed but not quantifiable in the ^{RNAi}SDH.i and Δ kdh-e2 cell lines (Figs 3B and 5).

Since α -ketoglutarate is produced from glutamate by the AAT transamination reaction (step 4) [11], the ^{RNAi}AAT.i cell line was studied to determine if AAT catalyzes the reverse reaction. The AAT activity was no longer detectable in the ^{RNAi}AAT.i cell line (Fig 5C), however, the catabolism of proline was only 2.5-fold reduced in the ^{RNAi}AAT.i cell line compared to the parental cell line (Fig 5D). In addition, the ^{RNAi}AAT.i cell line still produced glutamate from α -ketoglutarate (Fig 5E). This suggests that an alternative enzyme is involved in the reversible conversion of glutamate to α -ketoglutarate. Interestingly, alanine conversion to acetate, which theoretically requires the AAT activity working in the direction of glutamate production (see Fig 1A), was 20-fold reduced in the ^{RNAi}AAT.i cell line (Fig 5D), suggesting that the alternative enzyme is not using alanine as substrate to convert α -ketoglutarate to glutamate and is probably not another aminotransferase showing substrate promiscuity. Thus, the best candidate is the NADH-dependent glutamate dehydrogenase previously described in trypanosomatids [12,31].

It is noteworthy that the possible NADH consumption through reduction of α -ketoglutarate to 2-hydroxyglutarate ($5.6 \pm 0.47 \mu$ mol produced/h/mg of protein) and glutamate ($1.3 \pm 0.17 \mu$ mol produced/h/mg of protein) may compensate NADH production by the KDH reaction ($6.8 \pm 0.35 \mu$ mol of succinate produced/h/mg of protein).

α -Ketoglutarate rescued the growth defect of the ^{RNAi}PRODH.i and ^{RNAi}AAT.i mutants

We previously showed that proline dehydrogenase (PRODH), which catalyzes the first step of proline catabolism, is important for the growth of the PCF in glucose-depleted conditions [6]. Growth of the ^{RNAi}PRODH.i cell line was considerably reduced but not abolished in glucose-depleted conditions, probably because of the residual PRODH activity (Fig 6A) and residual conversion of proline to excreted end-products (Fig 6B). As expected, proline did not rescue growth of the ^{RNAi}PRODH.i mutant in glucose-depleted conditions. However, succinate and malate improved growth of the mutant and more importantly α -ketoglutarate completely rescued its growth (Fig 6C), even in the presence of 12 mM proline (Fig 6D). Unfortunately, we failed to obtain the Δ prodh null mutant using the classic allele deletion approach under standard glucose-rich conditions, with or without 10 mM α -ketoglutarate, probably because minimal proline catabolism is required even in the presence of glucose. As mentioned above, proline metabolism was 2.5-fold reduced in the ^{RNAi}AAT.i mutant cell line (Fig 5D). This caused a slight growth defect in glucose-depleted conditions that was rescued by the addition

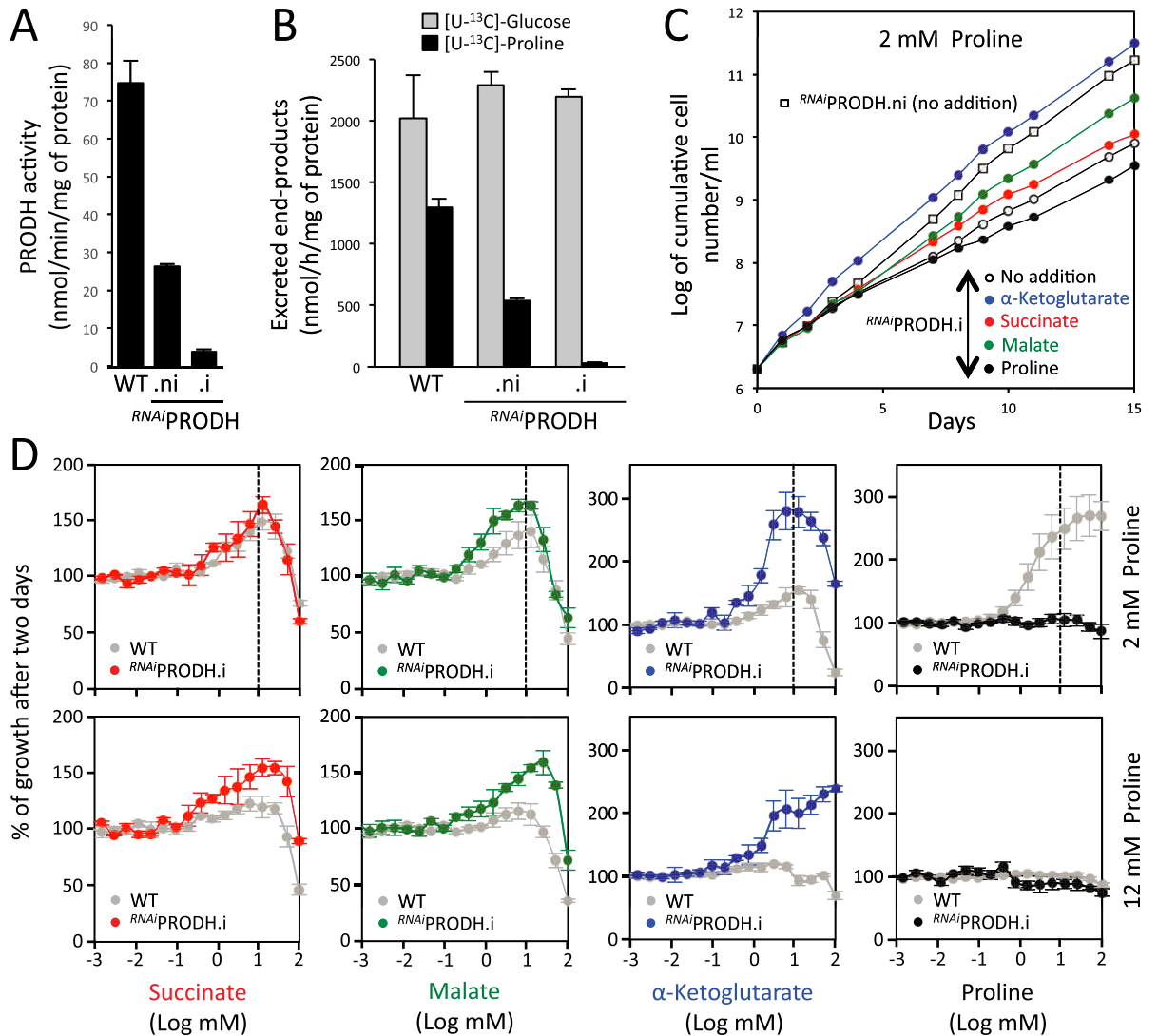


Fig 6. Growth of the *RNAiPROD.H.i* mutant is rescued by α -ketoglutarate. The efficiency of RNAi-mediated downregulation of PROD.H expression in the tetracycline-induced (.i) or non induced (.ni) *RNAiPROD.H* cell line, as well as in the parental cell line (WT) was determined by the PROD.H activity assay (panel A) and ¹H-NMR quantification of end-products excreted from metabolism of proline and glucose in two independent experiments (panel B). Panel C shows growth curves of the *RNAiPROD.H.i* cell line in glucose-depleted medium containing 2 mM proline, in the presence (colored circles) or absence (open circles) of 10 mM α -ketoglutarate, malate, succinate or proline. Cells were maintained in the exponential growth phase and cumulative cell numbers reflect normalization for dilution during cultivation. The effect of 10 mM succinate, malate, α -ketoglutarate or proline on growth of the parental and *RNAiPROD.H.i* cell lines in glucose-depleted medium containing 2 mM proline, using the Alamar Blue assay described in Fig 4, is shown in panel D.

<https://doi.org/10.1371/journal.ppat.1009204.g006>

of α -ketoglutarate, as observed for the *RNAiPROD.H.i* mutant (Fig 7B). Collectively, these data suggest that metabolism of α -ketoglutarate, and to a lesser extent in the case of the *RNAiPROD.H.i* cell line, succinate and malate, compensate for the lack of proline metabolism. To confirm these data, the ability of these carbon sources to replace proline was tested under long-term growth conditions. Because of the auxotrophy of *T. brucei* for proline, which is necessary for protein biosynthesis, the growth medium contained 0.2 mM proline. In these conditions, the growth defect observed in the absence of an additional carbon source is partially rescued with the same efficiency by 10 mM α -ketoglutarate, glucose, succinate and malate (S3

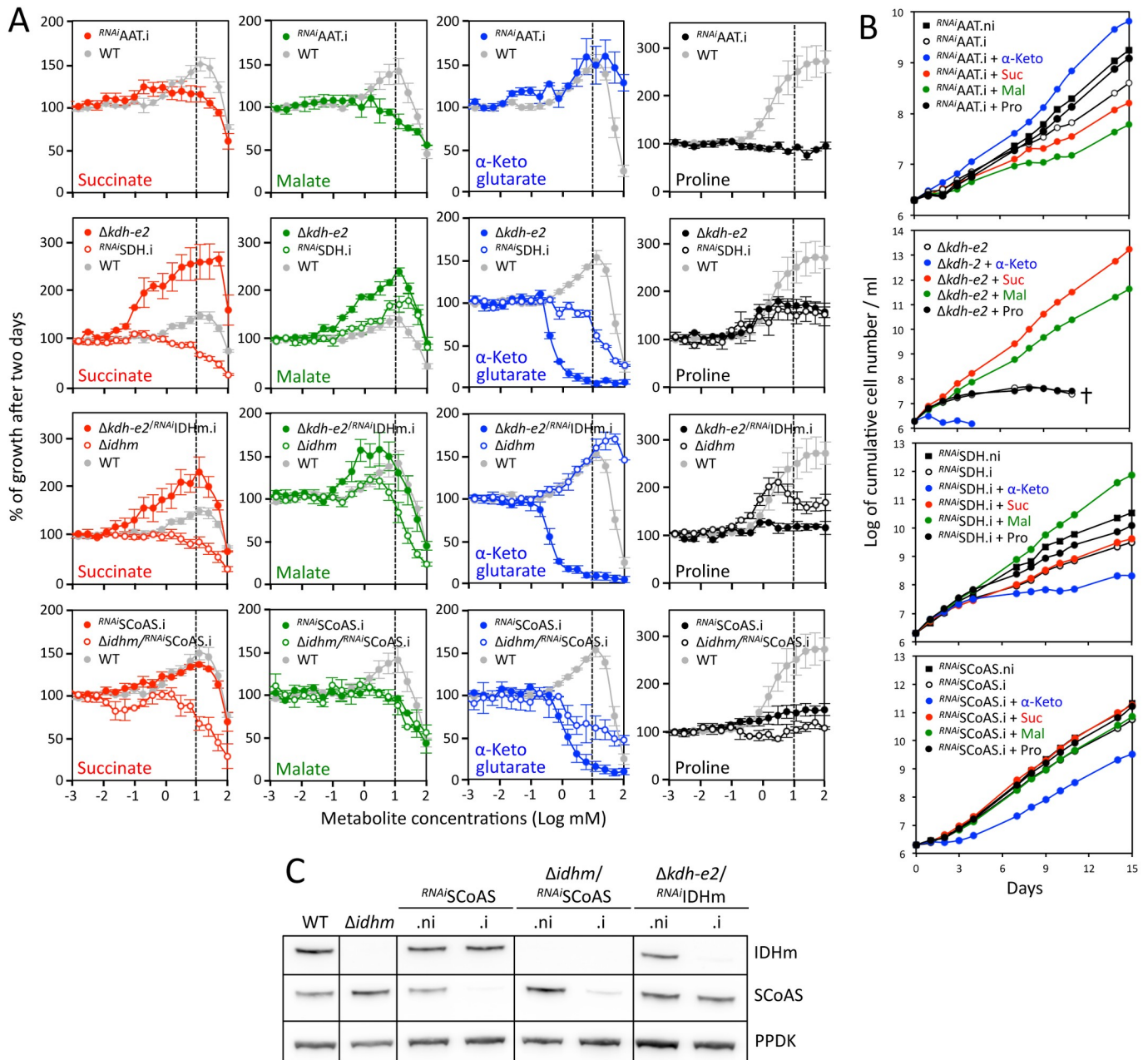


Fig 7. α -ketoglutarate is toxic for the $\Delta kdh-e2$, $RNAi^{SCoAS.i}$ and $RNAi^{SDH.i}$ cell lines. Panel A compares the effect of succinate, malate, α -ketoglutarate or proline (10 mM) on growth of the parental and mutant cell lines in glucose-depleted medium containing 2 mM proline, using the Alamar Blue assay described in Fig 4. Panel B shows growth curves of the $RNAi^{AAT.i}$, $\Delta kdh-e2$, $RNAi^{SDH.i}$ and $RNAi^{SCoAS.i}$ cell lines incubated in glucose-depleted medium containing 2 mM proline, in the presence (colored circles) or absence (open circles) of α -ketoglutarate, malate, succinate or proline (10 mM) (.i, tetracycline-induced cells;.ni, non induced cells). Cells were maintained in the exponential growth phase and cumulative cell numbers reflect normalization for dilution during cultivation. Panel C shows Western blot analyses with the immune sera indicated in the right margin of the parental (WT), $\Delta idhm$ and tetracycline-induced (.i) and non-induced (.ni) $RNAi^{SCoAS}$, $\Delta idhm/RNAi^{SCoAS}$ and $\Delta kdh-e2/RNAi^{IDHm}$ cell lines.

<https://doi.org/10.1371/journal.ppat.1009204.g007>

Fig). Interestingly, the growth rate in low-proline conditions is the same whether in the presence of glucose or malate/succinate/ α -ketoglutarate, thus confirming that these TCA cycle intermediates are excellent carbon and energy sources for PCF.

α -Ketoglutarate is toxic if not metabolized at a high rate

As mentioned above, proline metabolism was strongly affected in the $\Delta kdh-e2$ mutant, with only production of α -ketoglutarate and 2-hydroxyglutarate (Fig 5A and 5B). As a consequence, growth of the $\Delta kdh-e2$ mutant was compromised in glucose-depleted medium containing 2 mM or 10 mM proline, while the addition of 10 mM malate or succinate rescued this growth phenotype (Fig 7A and 7B). However, addition of α -ketoglutarate at concentrations as low as 1 mM was detrimental for the survival of the $\Delta kdh-e2$ mutant (Fig 7A and 7B). This toxic effect of α -ketoglutarate was confirmed by the analysis of the $^{RNAi}SDH.i$ and $^{RNAi}SCoAS.i$ mutants, which are also affected in α -ketoglutarate metabolism. Indeed, growth of these two mutant cell lines was reduced in the presence of α -ketoglutarate (Fig 7B). It is also of note that expression of SCoAS was not fully abolished in the $^{RNAi}SCoAS.i$, which may explain the moderate reduction in its growth (Fig 7C). These data suggest that accumulation of α -ketoglutarate, or one of its metabolic derivatives, is toxic to PCF trypanosomes. Indeed, we cannot exclude that reduction of α -ketoglutarate to isocitrate, citrate or one of their metabolic products is responsible for this phenotype (see Fig 1D). To block the possible citrate/isocitrate production from α -ketoglutarate in the $\Delta kdh-e2$ and $^{RNAi}SCoAS$ backgrounds, the *IDHm* gene was knocked down or knocked out to produce the $\Delta kdh-e2/^{RNAi}IDHm$ and $\Delta idhm/^{RNAi}SCoAS$ cell lines, respectively. Growth of these tetracycline-induced double mutants was strongly impaired by the addition of α -ketoglutarate as observed for the $\Delta kdh-e2$ and $^{RNAi}SCoAS.i$ single mutants, while α -ketoglutarate stimulated growth of the $\Delta idhm$ as observed for the parental cell line (Fig 7A). This confirmed that it is accumulation of α -ketoglutarate itself that is responsible for this phenomenon.

It is noteworthy that accumulation of succinate was not toxic for trypanosomes, as exemplified by the absence of effect of 10 mM succinate on growth of the $^{RNAi}SDH.i$ cell line (Fig 7B), which was no longer able to metabolize succinate (Fig 3B). As expected, malate stimulated growth of this mutant (Fig 7B).

α -Ketoglutarate stimulates growth of epimastigote-like forms

To investigate whether TCA cycle intermediates are also carbon sources for the epimastigote trypanosomes, we took advantage of the *in vitro*-induced differentiation approach developed by Kolev *et al.*, in which the differentiation of PCF to epimastigotes and then into metacyclics is triggered by overexpression of a single RNA binding protein (RBP6) [32]. In order to increase the proportion of epimastigotes and their sustainability before differentiation to metacyclics, we selected a cell line expressing relatively low levels of RBP6, since the *in vitro*-induced differentiation of epimastigotes into metacyclics depends on strong overexpression of RBP6 [32]. Upon induction of RBP6 expression, the selected $^{OE}RBP6.i$ cell line expressed the BARP (*brucei* alanine rich proteins) epimastigote differentiation marker [33], as well as the alternative oxidase (TAO), which has recently been shown to be strongly overexpressed in epimastigotes [34] (Fig 8A). This was confirmed by fluorescence microscopy three days post-induction, when 54% of the cells showed an epimastigote-like repositioning of the kinetoplast to reside close to the nucleus, while the other cells were procyclic-like (S4 Fig). Due to the low RBP6 expression, no metacyclics were observed after eight days of induction, which is consistent with the unchanging expression of calflagin (Fig 8A), a flagellar protein expected to be up-regulated in metacyclics since it is 10-fold upregulated in the bloodstream forms compared to

procyclics [35]. We thus concluded that this tetracycline-induced ^{OE}RBP6 cell line is enriched in epimastigote-like forms and/or forms in the process of becoming epimastigotes, whose carbon source requirements can be investigated. Growth of the ^{OE}RBP6.i cells stopped after 6 days in the presence of 2 mM proline, while growth of non-induced ^{OE}RBP6.ni cells was not affected. Interestingly, this growth defect is rescued by the addition of 10 mM proline or 10 mM α -ketoglutarate, but not the same quantity of succinate or malate. We confirmed that the expression profile of BARP and TAO is not affected by the presence of 10 mM α -ketoglutarate or 10 mM proline (Fig 8C), and similarly to the original growth conditions ~50% of the cells showed an epimastigote-like repositioning of the kinetoplast three days post-induction. It can be noted that whatever the growth conditions applied, the overall cellular traits of the cell population remained the same throughout the experiment. This data suggested that the concentration of proline present in the digestive track of the fly (1–2 mM) might be not sufficient to sustain growth of the epimastigotes and/or procyclic cells differentiating into epimastigotes and that additional carbon sources, such as α -ketoglutarate, may be needed to complete the development of the parasite *in vivo*.

Discussion

Procyclic trypanosomes are thought to have developed a central metabolic network adapted to the metabolism of three main carbon sources for their energy, *i.e.* glucose, glycerol and proline [5,10,36]. Here we show that the parasite efficiently metabolizes a number of other carbon sources, including pyruvate, alanine and the TCA cycle intermediates succinate, malate and α -ketoglutarate. Several reports previously described the ability of African trypanosomes to consume and metabolize TCA cycle intermediates. For instance, α -ketoglutarate has been described to stimulate respiration and to sustain mobility of the stumpy forms of *T. brucei*, which are a growth-arrested transition form found in the bloodstream that are pre-adapted to differentiation into PCF [37–40]. In the 1960s, Ryley showed that TCA cycle intermediates, including α -ketoglutarate, succinate, malate and fumarate, stimulate oxygen consumption of *T. brucei rhodesiense* culture forms (PCF) [36]. However, the metabolism of these TCA cycle intermediates by PCF trypanosomes has not been investigated so far in the context of the insect-like environment, that is to say in the absence of glucose but with proline present in the low millimolar range (1–2 mM), as described for the midgut of the tsetse fly [20]. Here we showed that in the presence of 2 mM proline, consumption and metabolism of succinate, malate and α -ketoglutarate takes place. More importantly, addition of 1–10 mM of any one of these three TCA cycle intermediates stimulates and rescues growth of the parasite in the presence of 2 mM and 0.2 mM proline, respectively.

A full TCA cycle can operate in procyclic trypanosomes

We took advantage of the unexpectedly high mitochondrial metabolic capacity developed by the PCF trypanosomes in the presence of α -ketoglutarate, succinate or malate to carry out a detailed analysis of the TCA cycle and its branched pathways. This allowed us to show (i) the high metabolic capacity of the malate/ α -ketoglutarate branch of the TCA cycle, (ii) the toxicity of α -ketoglutarate intracellular accumulation and (iii) the production of 2-hydroxyglutarate from metabolism of α -ketoglutarate and proline. (i) Van Weelden *et al.* previously demonstrated that PCF trypanosomes cultured in rich medium do not need to oxidize glucose *via* a complete TCA cycle fed with glucose-derived acetyl-CoA [15]. Indeed, they showed that the growth rate of the Δ aco and parental cell lines was identical in the standard glucose-rich medium and, more importantly, the malate/ α -ketoglutarate branch of the TCA cycle (steps 11–14 in Fig 1A) showed no significant activity in PCF trypanosomes, as measured by [¹⁴C]-

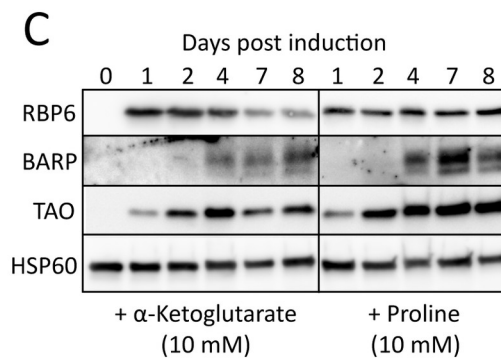
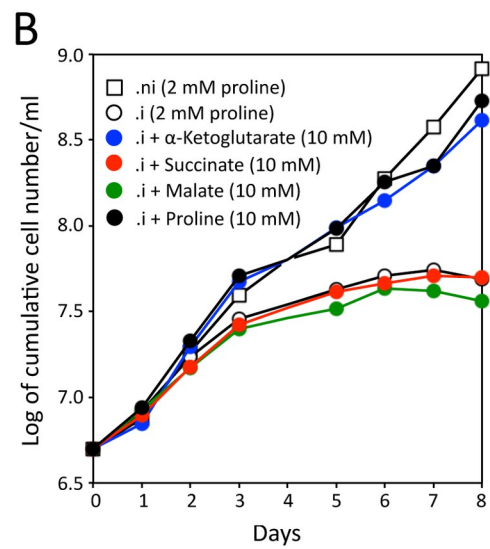
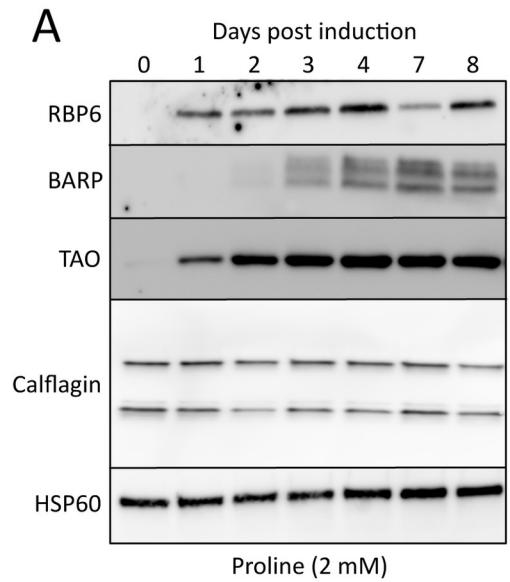


Fig 8. Large concentration of carbon sources are required for the growth of epimastigote-like cells. Panels A and C show Western blot analyses with the indicated immune sera (BARP, *brucei* alanine rich proteins; TAO, terminal alternative oxidase) of the ^{OE}RBP6 cell line upon tetracycline induction and growth in low-proline conditions (2 mM) after addition (panel C) or not (panel A) of 10 mM α -ketoglutarate or 10 mM proline. HSP60 was used as loading control. Panel B shows growth curves of the tetracycline-induced (.i) and non-induced (.ni) ^{OE}RBP6 cell line, in the presence of 2 mM proline, with or without addition of 10 mM α -ketoglutarate, succinate, malate, or proline. The curves are representative replicates of three different experiments.

<https://doi.org/10.1371/journal.ppat.1009204.g008>

CO₂ release from labeled glucose. However, these data did not exclude a functional malate/ α -ketoglutarate branch, which is used under specific nutritional conditions or in particular developmental stages, and the sensitivity of the assay used in that work was limited. Here we have demonstrated the functionality of this metabolic branch by forcing the parasite to use it in the presence of 10 mM malate and 2 mM proline. In these conditions, malate is converted to succinate *via* both the reducing (steps 9–10 in Fig 1C) and oxidative (steps 11–14 and 5–6) branches of the TCA cycle. Indeed, fumarate production from malate is abolished in the ^{RNAi}FHc/m.i mutant (step 10), while succinate production from malate is little affected, and succinate production is only reduced by 1.8-fold in the ^{RNAi}FRDg/m.i mutant (step 9). These data can only be explained by a significant metabolic flux through the malate/ α -ketoglutarate branch of the TCA cycle fed with extracellular malate. Since this branch of the TCA cycle does not seem to be important for their energy in standard culture conditions in the wild type PCF trypanosomes [15], its main function in the procyclic trypanosomes could be the production of citrate and/or isocitrate to supply other metabolic pathways. This hypothesis is consistent with the glycosomal localization of the IDHg isoform, which requires isocitrate for NADH and/or NADPH production within the organelle [41]. However, as opposed to most eukaryotes, trypanosomes do not use TCA-cycle derived citrate to produce the precursor of *de novo* fatty acid biosynthesis, *i.e.* acetyl-CoA, in the cytosol. The parasites lack the key enzyme of this pathway, *i.e.* cytosolic acetyl-CoA lyase, and instead use the cytosolic AMP-dependent acetyl-CoA synthetase to produce acetyl-CoA from acetate [42]. Interestingly, Dolezelova *et al.* recently took advantage of an *in vitro* differentiation assay based on RBP6 overexpression to show that all enzymes of the malate/ α -ketoglutarate branch of the TCA cycle are strongly overexpressed upon differentiation into the epimastigote forms of *T. brucei* [34]. This suggests that this branch of the TCA cycle and/or the full TCA cycle is required for epimastigotes and/or during differentiation of procyclics into epimastigotes. (ii) Accumulation of the TCA cycle intermediate α -ketoglutarate is toxic for PCF, while accumulation of succinate in the ^{RNAi}SDH.i mutant cultivated in the presence of 10 mM succinate is not toxic. α -Ketoglutarate toxicity was deduced from the death of the $\Delta kdh-e2$ and $\Delta kdh-e2$ /^{RNAi}IDHm.i mutants in the presence of α -ketoglutarate, which is not efficiently metabolized in these mutants compared to the parental cell line. α -Ketoglutarate is a key metabolite at the interface between metabolism of carbon and nitrogen [43], which has recently emerged as a master regulator metabolite in prokaryotes and cancer cells [44,45]. Consequently, intracellular accumulation of large amounts of α -ketoglutarate could affect several essential pathways, by mechanisms that are currently unknown. (iii) 2-Hydroxyglutarate is a five-carbon dicarboxylic acid occurring naturally in animals, plants, yeasts and bacteria. It has recently been described as an epigenetic modifier that governs T cell differentiation and plays a role in cancer initiation and progression [28,46]. This metabolite was also detected in the metabolome of BSF trypanosomes, being derived from the metabolism of glutamate [30]. Here we showed that 2-hydroxyglutarate represents 37% of the total end-products excreted by PCF from catabolism of α -ketoglutarate, with an excretion rate of 2-hydroxyglutarate 3.4 times higher than that of end-products from glucose metabolism (6.77 *versus* 2.02 μ mole/h/mg of protein). This highlights the high capacity

of the enzyme responsible for α -ketoglutarate reduction to 2-hydroxyglutarate. This reaction probably results from the promiscuous action of malate dehydrogenase on α -ketoglutarate or from oncogenic mutations in isocitrate dehydrogenase enzymes, as previously described in mammalian cells [29,47]. This NADH-consuming reaction compensates for the NADH-producing reactions involved in the production of other end-products excreted from α -ketoglutarate metabolism, and may therefore explain the very high α -ketoglutarate metabolic flux. Indeed, maintenance of the mitochondrial redox balance required for α -ketoglutarate metabolism is performed by fast-acting substrate level reactions, with little or no involvement of the respiratory chain, which operates at a lower rate compared to substrate-level reactions. Most cells express 2-hydroxyglutarate dehydrogenase enzymes (2HGDH), which irreversibly catalyse the reverse oxidative reaction in order to prevent the loss of carbon moieties from the TCA cycle and would protect from the accumulation of 2-hydroxyglutarate [28]. The *T. brucei* genome contains a putatively annotated 2HGDH gene (Tb927.10.9360), however since 2-hydroxyglutarate is produced in high quantities in PCF, its role in these cells is uncertain.

Trypanosomes recycle end-products excreted from glucose metabolism

Trypanosomatids convert carbon sources to partially oxidized end-products that are excreted into the environment [5]. Some of these metabolites constitute good alternative carbon sources for the parasite, as exemplified by an efficient metabolism of alanine by *T. cruzi*, while this amino acid is also excreted from glucose breakdown [48]. Here we report that end-products excreted from the metabolism of glucose by PCF trypanosomes, such as succinate, alanine and pyruvate, are re-consumed after glucose has been used up. Indeed, ^{13}C -enriched succinate and in a less extent ^{13}C -enriched alanine excreted from catabolism of [U- ^{13}C]-glucose are re-consumed and converted to ^{13}C -enriched acetate after glucose depletion. This phenomenon resembles the “acetate switch” which has been well described in prokaryotes, in which abundant or preferred nutrients, such as glucose, are first fermented to acetate, followed by the import and utilization of that excreted acetate to enhance survival of the cells [49]. This “acetate switch” occurs when cells deplete their environment of acetate-producing carbon sources. The switch to glucose-derived succinate observed in trypanosomes, when the medium is depleted in glucose, differs from the “acetate switch”, since it is observed when proline, which remains the main carbon source of the parasite, is present in the medium and consumed.

Acetate is the ultimate end-product excreted from carbon metabolism

We previously described that PCF trypanosomes cultivated in rich conditions use ~5 times more glucose than proline to feed their central carbon metabolism, and they switch to proline metabolism in the absence of glucose by increasing its rate of consumption up to 5 fold [6,7]. Indeed, glucose is first fermented to excreted acetate, succinate, alanine and pyruvate, before switching to proline that is primarily metabolized in the mitochondrion with an increased contribution of the respiratory chain. Here we showed that this switch to proline metabolism is accompanied by the re-utilization and conversion of glucose-derived end-products (succinate, pyruvate and alanine) to acetate. As opposed to bacteria or yeasts, however, acetate does not feed carbon metabolism of PCF and is the ultimate excreted end-product from the breakdown of the different carbon sources, including succinate and alanine. The ratio between the two main excreted end-products from glucose metabolism (acetate/succinate) has been reported to be between 0.3 and 4 in different studies [15,25], which has been interpreted to reflect a high flexibility of flux distribution between the acetate and succinate branches of the metabolic network [22,50]. In light of our observations, however, it appears that the

conversion of excreted glucose-derived succinate to excreted acetate, following uptake and further metabolism of succinate, provides an alternative explanation for these heterogeneous data.

α -Ketoglutarate rescues growth of epimastigotes in the presence of physiological amounts of proline

The *in vitro* differentiation model driven by overexpression of RBP6 was instrumental in showing that epimastigotes and/or cells in the process of differentiating into epimastigotes have a higher demand for carbon sources than procyclic trypanosomes to feed their central carbon metabolism. Indeed, a recent analysis of the proteome and metabolic capability showed that enzymes involved in proline catabolism, as well as mitochondrial respiratory capacity, are upregulated in the epimastigote-enriched population when compared to procyclic trypanosomes. This suggests an increased consumption of carbon sources, probably to meet an increased energy demand or to overcome a metabolic network less efficient for ATP production [34]. Consistent with these observations, our data demonstrated that growth of epimastigote-like cells, in contrast to that of procyclic cells, is affected by the presence of relatively small amounts of proline (2 mM), which corresponds to the level detected in the insect vector. Interestingly, adding 10 mM proline or 10 mM α -ketoglutarate restored growth, suggesting that this higher demand for carbon and energy sources may be supported by carbon sources other than proline, such as α -ketoglutarate. This increased demand for carbon/energy may contribute to the production of reactive oxygen species involved in the differentiation process of the parasite [34]. Alternatively, inhospitable organs of the fly or structures difficult to cross, such as the proventriculus, may require increased catabolic capacity. Indeed, the proventriculus is an active immune tissue of the insect that represents a hurdle to the spread of trypanosomes from the midgut to the salivary glands, since only a few trypanosomes can pass through it. Unfortunately, with the exception of amino acids [20], the content of metabolites in the tsetse midgut, including the proventriculus, has not been studied so far. TCA cycle intermediates could be present in significant amounts where, for example, tsetse resident symbionts such as *Sodalis glossinidius* metabolize N-acetylglucosamine and glutamine to produce partially oxidized end-products, which are released to the midgut lumen of the fly [18]. These may then promote trypanosome development. An exhaustive analysis of the metabolite content of the intestine of naive and infected insects is necessary to deepen our understanding of the role played by TCA cycle intermediates and other carbon sources in the development of trypanosomes in tsetse flies. In addition, our model should be tested *in vivo* by challenging tsetse flies with mutants unable to use a full TCA cycle, since, as mentioned above, the tsetse midgut is a very complex environment containing a large community of symbiotic and commensal bacteria that can potentially provide a range of nutrients for the parasite.

Materials and methods

Trypanosomes and cell cultures

The procyclic form of *T. brucei* EATRO1125.T7T (TetR-HYG T7RNAPOL-NEO) and AnTat 1.1 were cultured at 27°C in SDM79 medium containing 10% (v/v) heat inactivated fetal calf serum, 5 µg/ml hemin [51] and in the presence of hygromycin (25 µg/ml) and neomycin (10 µg/ml). All mutant cell lines have initially been produced and cultivated in the standard SDM79 medium. Alternatively, the cells were cultivated in a glucose-depleted medium derived from SDM79 supplemented with 50 mM N-acetylglucosamine, a specific inhibitor of glucose transport that prevents consumption of residual glucose [13]. Control growth conditions in

the presence of glucose were performed in glucose-depleted conditions, in which the glucose transport inhibitor N-acetylglucosamine was omitted and 10 mM glucose was added. The growth was followed by counting the cells daily with a Guava EasyCyte cytometer. The Alamar Blue assay was used to study the effect of metabolites on parasite growth. To do this, cells at a final density of 2×10^6 cells/ml were diluted in 200 μ l of glucose-depleted medium supplemented with 6 mM proline/10 mM glucose, 2 mM proline or 12 mM proline containing 1 μ M to 100 mM of the analyzed metabolite and incubated for 48 h at 27°C in microplates, before adding 20 μ l of 0.49 mM Alamar Blue (Resazurin). Measurement of fluorescence was performed with the microplate reader Fluostar Optima (BMG Labtech) at 550 nm excitation wavelength and 600 nm emission wavelength as previously described [23].

Inhibition of gene expression by RNAi

The inhibition by RNAi of gene expression in the PCF trypanosomes was performed by expression of stem-loop “sense/antisense” (SAS) RNA molecules of the targeted sequences introduced into the pLew100 or a single fragment in the p2T7^{Ti}-177 expression vectors (kindly provided by E. Wirtz and G. Cross and by B. Wickstead and K. Gull, respectively) [52,53]. Plasmids pLew-FRDg/m1-SAS, p2T7-FHc/m-SAS, pLew-SDH-SAS, pLew-PDH-E2-SAS, pLew-AAT-SAS, p2T7-PRODH were used to generate the ^{RNAi}FRDg/m1-B5 [24], ^{RNAi}FHc/m-F10 [25], ^{RNAi}SDH [7], ^{RNAi}PDH-E2 [7], ^{RNAi}AAT [11] and ^{RNAi}PRODH [6] cell lines, as previously reported [54] (see Table 1). The ^{RNAi}AAT and ^{RNAi}PRODH mutants produced in the 29–13 cell line (derived from strain 427) and the other RNAi cell lines obtained in the EATRO1125.T7T background were grown in SDM79 medium containing hygromycin (25 μ g/ml), neomycin (10 μ g/ml) and phleomycin (5 μ g/ml). A 591 bp fragment of the beta subunit of SCoAS (Tb927.10.7410) was PCR amplified and cloned into the p2T7^{Ti}-177 plasmid using the BamHI and HindIII restriction sites (p2T7^{Ti}-177-SCoAS). Procyclic EATRO1125.T7T cells were transfected with the p2T7-177-SCoAS plasmid to generate the ^{RNAi}SCoAS cell line. To assemble p2T7^{Ti}-177-IDHm, a 1127 bp fragment of IDHm (Tb927.8.3690) was amplified (primers IDHm_fwd: TGTCTACAACACGTCCTCAA and IDHm_rev BamHI: CGATAggatcc-GATGGTTTTGATCGTTGC) from genomic AnTat1.1 DNA and cloned into the p2T7^{Ti}-177 plasmid using the BamHI and HindIII restriction sites.

Production of null mutants

The Δ *ach*^{RNAi}ASCT cell line was generated by introducing the pLew-ASCT-SAS plasmid in the Δ *ach* background [14]. To delete the genes encoding the subunit E2 of KDH (KDH-E2), the resistance markers blasticidin (BLA) and puromycin (PAC) were PCR amplified using long primers with 80 bp corresponding to the 5'UTR and 3'UTR region of the *KDH-E2* gene (Tb927.11.9980). To replace the two *KDH-E2* alleles, the EATRO1125.T7T PCF was transfected with 10 μ g of purified PCR products encoding the resistance markers flanked by UTR regions. The selected Δ *kdh-e2::PAC*/ Δ *kdh-e2::BLA* cell line was named Δ *kdh-e2*. The cell line Δ *kdh-e2*^{RNAi}IDHm was generated by transfection of p2T7^{Ti}-177-IDHm into Δ *kdh-e2* and selection with phleomycin. For generation of a homozygous Δ *aco* cell line in the EATRO1125.T7T background, previously reported targeting constructs [15] were modified by replacing the neomycin and hygromycin selection markers with blasticidin and puromycin, respectively. For homozygous deletion of IDHm (Tb927.8.3690), the EATRO1125.T7T line was transfected with targeting constructs having the blasticidin and puromycin selection marker cassettes flanked by *IDHm* 5'-UTR (797 bp) and 3'-UTR (876 bp) sequences, amplified from genomic DNA of strain MiTat1.4. The selected Δ *idhm::PAC*/ Δ *idhm::BLA* cell line was named Δ *idhm*.

The *Δidhm* null mutant was transfected with the p2T7^{Ti}-177-SCoAS plasmid to generate the *Δidhm*^{RNAi}SCoAS cell line.

***In vitro* differentiation of PCF expressing RBP6**

The *RBP6* gene was amplified by PCR and cloned via HindIII/BamHI into the pLew100v5b1d vector (pLew100v5 modified with a blasticidin resistance gene *BSD*) [23]. The EATRO1125. T7T cell line was transfected with the pLew100v5-RBP6 plasmid linearized with NotI in pools to generate the ^{OE}RBP6. *In vitro* differentiation experiments were done as described in [23,32]. Briefly, the ^{OE}RBP6.ni cells were pre-incubated for 4 days in SDM79 medium without glucose in the presence of 50 mM *N*-acetyl-D-glucosamine and 10% (v/v) heat-inactivated fetal calf serum [13]. RBP6 expression was induced by addition of 10 μg/ml tetracycline with a cell density at 3 × 10⁶ cells/ml. The cell cultures were then diluted daily to maintain cell density between 3 × 10⁶ and 1.2 × 10⁷ cells/ml, unless their growth diminished or stopped.

Analysis of excreted end-products from the metabolism of carbon sources by proton ¹H-NMR

2 × 10⁷ *T. brucei* PCF cells were collected by centrifugation at 1,400 g for 10 min, washed once with phosphate-buffered saline (PBS) and incubated in 1 ml (single point analysis) of PBS supplemented with 2 g/l NaHCO₃ (pH 7.4). For kinetic analyses, 1 × 10⁹ cells were incubated in 15 ml under the same conditions. Cells were maintained for 6 h at 27°C in incubation buffer containing one or two ¹³C-enriched or non-enriched carbon sources. The integrity of the cells during the incubation was checked by microscopic observation. The supernatant (1 ml) was collected and 50 μl of maleate solution in D₂O (10 mM) was added as internal reference. ¹H-NMR spectra were performed at 500.19 MHz on a Bruker Avance III 500 HD spectrometer equipped with a 5 mm cryoprobe Prodigy. Measurements were recorded at 25°. Acquisition conditions were as follows: 90° flip angle, 5,000 Hz spectral width, 32 K memory size, and 9.3 sec total recycle time. Measurements were performed with 64 scans for a total time close to 10 min 30 sec. Resonances of the obtained spectra were integrated and metabolites concentrations were calculated using the ERETIC2 NMR quantification Bruker program. The identification of 2-hydroxyglutarate in some samples was duly confirmed from ¹H-NMR analyses carried out at 800 MHz, after spiking with the pure compound.

Western blot analyses

Total protein extracts (5 × 10⁶ cells) were separated by SDS-PAGE (10%) and immunoblotted on TransBlot Turbo Midi-size PVDF Membranes (Bio-Rad) [55]. Immunodetection was performed as described [55,56] using as primary antibodies, the rabbit anti-ASCT (1:500) [57], anti-aldolase (1:10,000) [58], anti-PPDK (1:500) [54], anti-ENO (1:100,000, gift from P. Michels, Edinburgh, UK), anti-FRD (1:100) [24], anti-HSP60 (1:10,000) [59], anti-RBP6 (1:500, gift from C. Tschudi, New Haven, USA), anti-BARP (1:2,500, gift from I. Roditi, Bern, Switzerland) [33] and anti-calflagin (1:1,500) or the mouse anti-PDH-E2 (1:500) [21], anti-TAO 7D3 (1:100, gift from M. Chaudhuri, Nashville, USA) [60] and anti-FH (1:100) [25]. Rabbit anti-IDHm was raised against recombinant His-tagged full length *T. brucei* IDHm expressed in and purified from *E. coli*. After intradermal immunization with Freund's complete adjuvant, 12 boosts were required until final bleeding after 180 days (custom immunization by Pineda, Berlin). The recombinant full length SCoAS subunit β with N-terminal 6x His tag was affinity-purified from *E. coli* under native conditions and sent to Davids Biotechnology (Regensburg, Germany) for polyclonal antibody production. Anti-rabbit or anti-mouse IgG conjugated to horseradish peroxidase (Bio-Rad, 1:5,000 dilution) were used as secondary

antibody and detected using the Clarity Western ECL Substrate as described by the manufacturer (Bio-Rad). Images were acquired and analyzed with the ImageQuant LAS 4,000 luminescent image analyzer.

Enzymatic activity assays

For PRODH and SDH activities, log phase PCF cells were harvested and washed twice with STE buffer (25 mM Tris-HCl, pH 7.4, 1 mM EDTA, 0.25 M sucrose, Protease inhibitors) and treated with 0.35 mg digitonin per mg of protein for 4 min at room temperature. After centrifugation 2 min at 12,000 x g, the enzymatic activities were determined in the pellets resuspended in STE. Proline dehydrogenase (PRODH) and succinate dehydrogenase activities (SDH) were measured following the reduction of the electron-accepting dye dichlorophenolindophenol (DCPIP) at 600 nm [61]. The assays contained 11 mM MOPS pH 7.5, 11 mM MgCl₂, 11% glycerol, 56 μM DCPIP, 0.9 mM PMS, 10 mM of proline for PRODH activity or 20 mM of succinate for SDH activity. The alanine aminotransferase (AAT) activity was measured following the oxidation of NADH at 340 nm [62]. The malate dehydrogenase (MDH) activity was determined as a control [63].

Supporting information

S1 Fig. Growth of the PCF trypanosomes in the glucose-depleted SDM79 medium containing 2 mM proline in the presence of added 10 μM to 100 mM metabolite, using the Alamar Blue assay. Incubation was started at 2×10^6 cell density and the Alamar Blue assay was performed after 48 h at 27°C as described before [23].

(TIF)

S2 Fig. ¹H-NMR analysis of samples (black) and controls (colored) performed at 800 MHz to identify acetate (A), alanine (Al), glutamate (G), 2-hydroxyglutarate (H), α-ketoglutarate (αKG), malate (M), proline and succinate (S). The resonances corresponding to ¹³C-enriched molecules are indicated in index.

(TIF)

S3 Fig. Growth curves of PCF trypanosomes grown in low-proline conditions (0.2 mM) in the presence or absence of 10 mM proline, glucose, α-ketoglutarate, succinate or malate. Cells were maintained in the exponential growth phase (between 10⁶ and 10⁷ cells/ml), and cumulative cell numbers reflect normalization for dilution during cultivation.

(TIF)

S4 Fig. Imaging of procyclic and epimastigote-like forms. Illustration of microscopic analyses of non-induced (.ni) (A) or induced (.i) (B-F) *O^ERBP6* cells grown in the presence of 2 mM proline complemented or not (A-B) with 10 mM of α-ketoglutarate (C), succinate (D), malate (E) or proline (F). The non-induced population is composed of procyclic trypanosomes (A), while epimastigote-like cells mainly composed the induced population regardless of the culture conditions. DAPI staining of DNA is shown on the left panels, in which kinetoplasts are highlighted by arrowheads and the distance between kinetoplasts and nuclei are shown by white lines, while the right panels show phase contrast (calibration bar: 5 μm). These analyses were performed three days post induction (B-F).

(TIF)

S1 Table. Excreted end-products from the metabolism of carbon sources in the PCF trypanosomes. The parasites were incubated with 4 mM [U-¹³C]-succinate, [U-¹³C]-alanine, [U-¹³C]-pyruvate or [U-¹³C]-acetate in the presence or absence of 4 mM glucose or proline. ^a

ICS (internal carbon source): intracellular carbon source of unknown origin metabolized by the PCF trypanosomes. ^b Amounts of end-products excreted (here malate) from the carbon source indicated in brackets, expressed as nmoles excreted per h and per 10⁸ cells. ^c *nd*: not detectable. ^d End-products excreted (here malate) from glucose or the ICS, which are both non-enriched. ^e End-products excreted (here malate) from proline or the ICS, which are both non-enriched. The asterisks mean that in this particular experiment the values correspond to proline only, since it is ¹³C-enriched.
(TIF)

Acknowledgments

We thank Paul A. Michels (Edinburgh, Scotland), Christian Tschudi (New Haven, USA), Minu Chaudhuri (Nashville, USA) and Isabel Roditi (Bern, Switzerland) for providing us with the anti-enolase, anti-RBP6, anti-TAO and anti-BARP immune sera, respectively.

Author Contributions

Conceptualization: Oriana Villafraz, Emmanuel Tetaud, Loïc Rivière, Jean-Charles Portais, Frédéric Bringaud.

Formal analysis: Oriana Villafraz, Marc Biran, Erika Pineda, Nicolas Plazolles, Edern Cahoreau, Rodolpho Ornitz Oliveira Souza, Magali Thonnus, Stefan Allmann.

Funding acquisition: Frédéric Bringaud.

Investigation: Oriana Villafraz, Frédéric Bringaud.

Methodology: Oriana Villafraz, Marc Biran, Erika Pineda, Nicolas Plazolles, Edern Cahoreau, Magali Thonnus, Stefan Allmann, Michael P. Barrett, Alena Zíková.

Project administration: Frédéric Bringaud.

Resources: Frédéric Bringaud.

Supervision: Ariel M. Silber, Michael Boshart, Jean-Charles Portais, Frédéric Bringaud.

Writing – original draft: Oriana Villafraz, Frédéric Bringaud.

Writing – review & editing: Emmanuel Tetaud, Loïc Rivière, Ariel M. Silber, Michael P. Barrett, Alena Zíková, Michael Boshart, Jean-Charles Portais.

References

1. Buscher P, Cecchi G, Jamonneau V, Priotto G. Human African trypanosomiasis. *Lancet*. 2017; 390: 2397–2409. [https://doi.org/10.1016/S0140-6736\(17\)31510-6](https://doi.org/10.1016/S0140-6736(17)31510-6) PMID: 28673422
2. Opperdoes FR, Borst P. Localization of nine glycolytic enzymes in a microbody-like organelle in *Trypanosoma brucei*: the glycosome. *FEBS Lett*. 1977; 80: 360–4. 0014-5793(77)80476-6 [pii] [https://doi.org/10.1016/0014-5793\(77\)80476-6](https://doi.org/10.1016/0014-5793(77)80476-6) PMID: 142663
3. Visser N, Opperdoes FR. Glycolysis in *Trypanosoma brucei*. *Eur J Biochem*. 1980; 103: 623–32. <https://doi.org/10.1111/j.1432-1033.1980.tb05988.x> PMID: 6766864
4. Mazet M, Morand P, Biran M, Bouyssou G, Courtois P, Daulouede S, et al. Revisiting the central metabolism of the bloodstream forms of *Trypanosoma brucei*: production of acetate in the mitochondrion is essential for parasite viability. *PLoS Negl Trop Dis*. 2013; 7: e2587. <https://doi.org/10.1371/journal.pntd.0002587> PNTD-D-13-01131 [pii] PMID: 24367711
5. Bringaud F, Riviere L, Coustou V. Energy metabolism of trypanosomatids: adaptation to available carbon sources. *Mol Biochem Parasitol*. 2006; 149: 1–9. S0166-6851(06)00115-0 [pii] <https://doi.org/10.1016/j.molbiopara.2006.03.017> PMID: 16682088

6. Lamour N, Riviere L, Coustou V, Coombs GH, Barrett MP, Bringaud F. Proline metabolism in procyclic *Trypanosoma brucei* is down-regulated in the presence of glucose. *J Biol Chem*. 2005; 280: 11902–11910. <https://doi.org/10.1074/jbc.M414274200> PMID: 15665328
7. Coustou V, Biran M, Breton M, Guegan F, Riviere L, Plazolles N, et al. Glucose-induced remodeling of intermediary and energy metabolism in procyclic *Trypanosoma brucei*. *J Biol Chem*. 2008; 283: 16342–54. M709592200 [pii] <https://doi.org/10.1074/jbc.M709592200> PMID: 18430732
8. Mantilla BS, Marchese L, Casas-Sanchez A, Dyer NA, Ejeh N, Biran M, et al. Proline metabolism is essential for *Trypanosoma brucei* survival in the tsetse vector. *PLoS Pathog*. 2017; 13: e1006158. <https://doi.org/10.1371/journal.ppat.1006158> PMID: 28114403
9. Bursell E. The role of proline in energy metabolism. New York: Plenum Press; 1981.
10. Obungu VH, Kiara JK, Olembo NK, Njobu MR. Pathways of glucose catabolism on procyclic *Trypanosoma congolense*. *Indian J Biochem Biophys*. 1999; 36: 305–11. PMID: 10844979
11. Spitznagel D, Ebikeme C, Biran M, Nic A, Bhaire N, Bringaud F, Henehan GT, et al. Alanine aminotransferase of *Trypanosoma brucei*—a key role in proline metabolism in procyclic life forms. *FEBS J*. 2009; 276: 7187–7199. EJB7432 [pii] <https://doi.org/10.1111/j.1742-4658.2009.07432.x> PMID: 19895576
12. Duschak VG, Cazzulo JJ. Subcellular localization of glutamate dehydrogenases and alanine aminotransferase in epimastigotes of *Trypanosoma cruzi*. *FEMS Microbiol Lett*. 1991; 67: 131–5. [https://doi.org/10.1016/0378-1097\(91\)90343-9](https://doi.org/10.1016/0378-1097(91)90343-9) PMID: 1778428
13. Allmann S, Morand P, Ebikeme C, Gales L, Biran M, Hubert J, et al. Cytosolic NADPH homeostasis in glucose-starved procyclic *Trypanosoma brucei* relies on malic enzyme and the pentose phosphate pathway fed by gluconeogenic flux. *J Biol Chem*. 2013; 288: 18494–505. M113.462978 [pii] <https://doi.org/10.1074/jbc.M113.462978> PMID: 23665470
14. Millerioux Y, Morand P, Biran M, Mazet M, Moreau P, Wargnies M, et al. ATP synthesis-coupled and -uncoupled acetate production from acetyl-CoA by the mitochondrial acetate:succinate CoA-transferase and acetyl-CoA thioesterase in *Trypanosoma*. *J Biol Chem*. 2012; 287: 17186–17197. M112.355404 [pii] <https://doi.org/10.1074/jbc.M112.355404> PMID: 22474284
15. Van Weelden SW, Fast B, Vogt A, Van Der Meer P, Saas J, Van Hellemond JJ, et al. Procyclic *Trypanosoma brucei* do not use Krebs cycle activity for energy generation. *J Biol Chem*. 2003; 278: 12854–12863. <https://doi.org/10.1074/jbc.M213190200> PMID: 12562769
16. van Hellemond JJ, Opperdoes FR, Tielens AG. The extraordinary mitochondrion and unusual citric acid cycle in *Trypanosoma brucei*. *Biochem Soc Trans*. 2005; 33: 967–71. <https://doi.org/10.1042/BST20050967> PMID: 16246022
17. Welburn SC, Arnold K, Maudlin I, Gooday GW. *Rickettsia*-like organisms and chitinase production in relation to transmission of trypanosomes by tsetse flies. *Parasitology*. 1993; 107 (Pt 2): 141–5. <https://doi.org/10.1017/s003118200006724x> PMID: 8414668
18. Hall RJ, Flanagan LA, Bottery MJ, Springthorpe V, Thorpe S, Darby AC, et al. A Tale of Three Species: Adaptation of *Sodalis glossinidius* to Tsetse Biology, *Wigglesworthia* Metabolism, and Host Diet. *MBio*. 2019; 10. <https://doi.org/10.1128/mBio.02106-18> PMID: 30602581
19. Ong HB, Lee WS, Patterson S, Wyllie S, Fairlamb AH. Homoserine and quorum-sensing acyl homoserine lactones as alternative sources of threonine: a potential role for homoserine kinase in insect-stage *Trypanosoma brucei*. *Mol Microbiol*. 2014; 95: 143–156. <https://doi.org/10.1111/mmi.12853> PMID: 25367138
20. Balogun RA. Studies on the amino acids of the tsetse fly, *Glossina morsitans*, maintained on in vitro and in vivo feeding systems. *Comp Biochem Physiol Comp Physiol*. 1974; 49: 215–22. [https://doi.org/10.1016/0300-9629\(74\)90110-8](https://doi.org/10.1016/0300-9629(74)90110-8) PMID: 4153811
21. Millerioux Y, Ebikeme C, Biran M, Morand P, Bouyssou G, Vincent IM, et al. The threonine degradation pathway of the *Trypanosoma brucei* procyclic form: the main carbon source for lipid biosynthesis is under metabolic control. *Mol Microbiol*. 2013; 90: 114–129. <https://doi.org/10.1111/mmi.12351> PMID: 23899193
22. Bringaud F, Biran M, Millerioux Y, Wargnies M, Allmann S, Mazet M. Combining reverse genetics and NMR-based metabolomics unravels trypanosome-specific metabolic pathways. *Mol Microbiol*. 2015; 96: 917–926. <https://doi.org/10.1111/mmi.12990> PMID: 25753950
23. Wargnies M, Bertiaux E, Cahoreau E, Ziebart N, Crouzols A, Morand P, et al. Gluconeogenesis is essential for trypanosome development in the tsetse fly vector. *PLoS Pathog*. 2018; 14: e1007502. <https://doi.org/10.1371/journal.ppat.1007502> PMID: 30557412
24. Coustou V, Besteiro S, Riviere L, Biran M, Biteau N, Franconi JM, et al. A mitochondrial NADH-dependent fumarate reductase involved in the production of succinate excreted by procyclic *Trypanosoma brucei*. *J Biol Chem*. 2005; 280: 16559–70. <https://doi.org/10.1074/jbc.M500343200> PMID: 15718239

25. Coustou V, Biran M, Besteiro S, Riviere L, Baltz T, Franconi JM, et al. Fumarate is an essential intermediary metabolite produced by the procyclic *Trypanosoma brucei*. *J Biol Chem*. 2006; 281: 26832–46. <https://doi.org/10.1074/jbc.M601377200> PMID: 16857679
26. Bringaud F, Ebikeme CE, Boshart M. Acetate and succinate production in amoebae, helminths, diplomonads, trichomonads and trypanosomatids: common and diverse metabolic strategies used by parasitic lower eukaryotes. *Parasitology*. 2010; 137: 1315–1331. <https://doi.org/10.1017/S0031182009991843> PMID: 20028611
27. Muller M, Mentel M, van Hellemond JJ, Henze K, Woehle C, Gould SB, et al. Biochemistry and evolution of anaerobic energy metabolism in eukaryotes. *Microbiol Mol Biol Rev*. 2012; 76: 444–95. 76/2/444 [pii] <https://doi.org/10.1128/MMBR.05024-11> PMID: 22688819
28. Engqvist MK, Esser C, Maier A, Lercher MJ, Maurino VG. Mitochondrial 2-hydroxyglutarate metabolism. *Mitochondrion*. 2014; 19 Pt B: 275–81. <https://doi.org/10.1016/j.mito.2014.02.009> PMID: 24561575
29. Intlekofer AM, Wang B, Liu H, Shah H, Carmona-Fontaine C, Rustenburg AS, et al. L-2-Hydroxyglutarate production arises from noncanonical enzyme function at acidic pH. *Nat Chem Biol*. 2017; 13: 494–500. <https://doi.org/10.1038/nchembio.2307> PMID: 28263965
30. Johnston K, Kim DH, Kerkhoven EJ, Burchmore R, Barrett MP, Achcar F. Mapping the metabolism of five amino acids in bloodstream form *Trypanosoma brucei* using U-(13)C-labelled substrates and LC-MS. *Biosci Rep*. 2019; 39. <https://doi.org/10.1042/BSR20181601> PMID: 31028136
31. Bringaud F, Striepecke R, Frech GC, Freedland S, Turck C, Byrne EM, et al. Mitochondrial glutamate dehydrogenase from *Leishmania tarentolae* is a guide RNA-binding protein. *Mol Cell Biol*. 1997; 17: 3915–23. <https://doi.org/10.1128/mcb.17.7.3915> PMID: 9199326
32. Kolev NG, Ramey-Butler K, Cross GA, Ullu E, Tschudi C. Developmental progression to infectivity in *Trypanosoma brucei* triggered by an RNA-binding protein. *Science*. 2012; 338: 1352–3. 338/6112/1352 [pii] <https://doi.org/10.1126/science.1229641> PMID: 23224556
33. Urwyler S, Studer E, Renggli CK, Roditi I. A family of stage-specific alanine-rich proteins on the surface of epimastigote forms of *Trypanosoma brucei*. *Mol Microbiol*. 2007; 63: 218–228. <https://doi.org/10.1111/j.1365-2958.2006.05492.x> PMID: 17229212
34. Dolezelova E, Kunzova M, Dejung M, Levin M, Panicucci B, Regnault C, et al. Cell-based and multi-omics profiling reveals dynamic metabolic repurposing of mitochondria to drive developmental progression of *Trypanosoma brucei*. *PLoS Biol*. 2020; 18: e3000741. <https://doi.org/10.1371/journal.pbio.3000741> PMID: 32520929
35. Emmer BT, Daniels MD, Taylor JM, Epting CL, Engman DM. Calflagin inhibition prolongs host survival and suppresses parasitemia in *Trypanosoma brucei* infection. *Eukaryot Cell*. 2010; 9: 934–42. <https://doi.org/10.1128/EC.00086-10> PMID: 20418379
36. Ryley JF. Studies on the metabolism of protozoa. 9. Comparative metabolism of bloodstream and culture forms of *Trypanosoma rhodesiense*. *Biochem J*. 1962; 85: 211–223. <https://doi.org/10.1042/bj0850211> PMID: 13983265
37. Vickerman K. Polymorphism and mitochondrial activity in sleeping sickness trypanosomes. *Nature*. 1965; 208: 762–6. <https://doi.org/10.1038/208762a0> PMID: 5868887
38. Flynn IW, Bowman IB. The metabolism of carbohydrate by pleomorphic African trypanosomes. *Comp Biochem Physiol B*. 1973; 45: 25–42. [https://doi.org/10.1016/0305-0491\(73\)90281-2](https://doi.org/10.1016/0305-0491(73)90281-2) PMID: 4719992
39. Bienen EJ, Maturi RK, Pollakis G, Clarkson AB. Non-cytochrome mediated mitochondrial ATP production in bloodstream form *Trypanosoma brucei brucei*. *Eur J Biochem*. 1993; 216: 75–80. <https://doi.org/10.1111/j.1432-1033.1993.tb18118.x> PMID: 8365419
40. Dewar CE, MacGregor P, Cooper S, Gould MK, Matthews KR, Savill NJ, et al. Mitochondrial DNA is critical for longevity and metabolism of transmission stage *Trypanosoma brucei*. *PLoS Pathog*. 2018; 14: e1007195. <https://doi.org/10.1371/journal.ppat.1007195> PMID: 30020996
41. Wang X, Inaoka DK, Shiba T, Balogun EO, Allmann S, Watanabe YI, et al. Expression, purification, and crystallization of type 1 isocitrate dehydrogenase from *Trypanosoma brucei brucei*. *Protein Expr Purif*. 2017; 138: 56–62. <https://doi.org/10.1016/j.pep.2017.06.011> PMID: 28642005
42. Riviere L, Moreau P, Allmann S, Hahn M, Biran M, Plazolles N, et al. Acetate produced in the mitochondrion is the essential precursor of lipid biosynthesis in procyclic trypanosomes. *Proc Natl Aca Sci USA*. 2009; 106: 12694–12699. <https://doi.org/10.1073/pnas.0903355106> PMID: 19625628
43. Forchhammer K, Selim KA. Carbon/Nitrogen Homeostasis Control in Cyanobacteria. *FEMS Microbiol Rev*. 2019. <https://doi.org/10.1093/femsre/fuz025> PMID: 31617886
44. Li F, Xu W, Zhao S. Regulatory roles of metabolites in cell signaling networks. *J Genet Genomics*. 2013; 40: 367–74. <https://doi.org/10.1016/j.jgg.2013.05.002> PMID: 23876777

45. Huergo LF, Dixon R. The Emergence of 2-Oxoglutarate as a Master Regulator Metabolite. *Microbiol Mol Biol Rev.* 2015; 79: 419–35. <https://doi.org/10.1128/MMBR.00038-15> PMID: 26424716
46. Ryan DG, Murphy MP, Frezza C, Prag HA, Chouchani ET, O'Neill LA, et al. Coupling Krebs cycle metabolites to signalling in immunity and cancer. *Nat Metab.* 2019; 1: 16–33. <https://doi.org/10.1038/s42255-018-0014-7> PMID: 31032474
47. Rzem R, Vincent MF, Van Schaftingen E, Veiga-da-Cunha M. L-2-hydroxyglutaric aciduria, a defect of metabolite repair. *J Inher Metab Dis.* 2007; 30: 681–9. <https://doi.org/10.1007/s10545-007-0487-0> PMID: 17603759
48. Girard R, Crispim M, Alencar MB, Silber AM. Uptake of L-Alanine and Its Distinct Roles in the Bioenergetics of *Trypanosoma cruzi*. *mSphere.* 2018; 3. <https://doi.org/10.1128/mSphereDirect.00338-18> PMID: 30021880
49. Wolfe AJ. The acetate switch. *Microbiol Mol Biol Rev.* 2005; 69: 12–50. <https://doi.org/10.1128/MMBR.69.1.12-50.2005> PMID: 15755952
50. Ghozlane A, Bringaud F, Souedan H, Dutour I, Jourdan F, Thébault P. Flux analysis of the *Trypanosoma brucei* glycolysis based on a multiobjective-criteria bioinformatic approach. *Adv Bioinforma.* 2012; 2012: 159423. <https://doi.org/10.1155/2012/159423> PMID: 23097667
51. Brun R, Schonenberger M. Cultivation and in vitro cloning or procyclic culture forms of *Trypanosoma brucei* in a semi-defined medium. *Acta Trop.* 1979; 36: 289–92. PMID: 43092
52. Wirtz E, Leal S, Ochatt C, Cross GA. A tightly regulated inducible expression system for conditional gene knock-outs and dominant-negative genetics in *Trypanosoma brucei*. *Mol Biochem Parasitol.* 1999; 99: 89–101. [https://doi.org/10.1016/s0166-6851\(99\)00002-x](https://doi.org/10.1016/s0166-6851(99)00002-x) PMID: 10215027
53. Wickstead B, Ersfeld K, Gull K. Targeting of a tetracycline-inducible expression system to the transcriptionally silent minichromosomes of *Trypanosoma brucei*. *Mol Biochem Parasitol.* 2002; 125: 211–6. [https://doi.org/10.1016/s0166-6851\(02\)00238-4](https://doi.org/10.1016/s0166-6851(02)00238-4) PMID: 12467990
54. Bringaud F, Baltz D, Baltz T. Functional and molecular characterization of a glycosomal PPI-dependent enzyme in trypanosomatids: pyruvate, phosphate dikinase. *Proc Natl Acad Sci USA.* 1998; 95: 7963–8. <https://doi.org/10.1073/pnas.95.14.7963> PMID: 9653123
55. Harlow E, Lane D. *Antibodies: a laboratory manual.* Cold Spring Harbor Laboratory Press; 1988.
56. Sambrook J, Fritsch EF, Maniatis T. *Molecular cloning: a laboratory manual.* 2nd ed. New York: Cold Spring Harbor Laboratory Press; 1989.
57. Riviere L, van Weelden SW, Glass P, Vegh P, Coustou V, Biran M, et al. Acetyl:succinate CoA-transferase in procyclic *Trypanosoma brucei*. Gene identification and role in carbohydrate metabolism. *J Biol Chem.* 2004; 279: 45337–46. <https://doi.org/10.1074/jbc.M407513200> [pii] PMID: 15326192
58. Clayton CE. Import of fructose bisphosphate aldolase into the glycosomes of *Trypanosoma brucei*. *J Cell Biol.* 1987; 105: 2649–54. <https://doi.org/10.1083/jcb.105.6.2649> PMID: 3320052
59. Bringaud F, Peyruchaud S, Baltz D, Giroud C, Simpson L, Baltz T. Molecular characterization of the mitochondrial heat shock protein 60 gene from *Trypanosoma brucei*. *Mol Biochem Parasitol.* 1995; 74: 119–23. [https://doi.org/10.1016/0166-6851\(95\)02486-7](https://doi.org/10.1016/0166-6851(95)02486-7) PMID: 8719252
60. Chaudhuri M, Ajayi W, Hill GC. Biochemical and molecular properties of the *Trypanosoma brucei* alternative oxidase. *Mol Biochem Parasitol.* 1998; 95: 53–68. [https://doi.org/10.1016/s0166-6851\(98\)00091-7](https://doi.org/10.1016/s0166-6851(98)00091-7) PMID: 9763289
61. Brown ED, Wood JM. Conformational change and membrane association of the PutA protein are coincident with reduction of its FAD cofactor by proline. *J Biol Chem.* 1993; 268: 8972–9. PMID: 8473341
62. Bergmeyer HU, Bergmeyer J, Grassi M. *Methods of enzymatic analysis.* Wiley; 1983. [https://doi.org/10.1016/0003-2697\(83\)90607-3](https://doi.org/10.1016/0003-2697(83)90607-3) PMID: 6346947
63. Aranda A, Maugeri D, Uttaro AD, Opperdoes F, Cazzulo JJ, Nowicki C. The malate dehydrogenase isoforms from *Trypanosoma brucei*: subcellular localization and differential expression in bloodstream and procyclic forms. *Int J Parasitol.* 2006; 36: 295–307. <https://doi.org/10.1016/j.ijpara.2005.09.013> PMID: 16321390